

Report to McCarthy Stone

PROPOSED DEVELOPMENT OF
RETIREMENT LIVING
ACCOMMODATION FOR SALE AT
GLODDAETH ST/ MAELGWYN RD
LLANDUDNO

Evidence of housing demand and
supply

November 2021



Contents

1. Executive Summary	3
Methodology	3
Definitions and Terminology	4
The Case for Development	4
2. Local policy context	7
District Profile	7
Planning Policy and Performance	8
Local Plan/Core Strategy.....	8
Consideration of Older People in Current Planning Policy	9
Conwy Borough Local Plan Authority Monitoring Report (AMR) 2018/2019	10
Local Housing Priorities	10
Local Housing Strategy 2018-23	10
Conwy Local Housing Market Assessment (LHMA) 2016 – 2021 (published 2018)	11
Supply of Specialist Housing to Meet Need.....	12
Local Issues – Llandudno	12
Local Supply Available for Sale	12
Conclusions	13
3. Forecasting Specialist Housing demand in Conwy Borough Council.....	14
The RHG model.....	14
The Contact Consulting Model	15
Results from the RHG Model	15
Results from the Contact Consulting Model.....	17
Housing Supply and Demand in Llandudno.....	18
Conclusions	20
APPENDIX 1 STOCK OF SPECIALIST OLDER PERSONS HOUSING 6 th April 2021	21
Age Exclusive Housing	21
Retirement Housing.....	23
Enhanced Sheltered and Extra Care Housing	25
EAC Housing Care – Accommodation Report 6 th April 2021	26

1. EXECUTIVE SUMMARY

Methodology

- 1.1 Three Dragons was commissioned in April 2021 by The Planning Bureau Ltd. to undertake a housing need and demand study for a McCarthy & Stone Retirement Living development proposal on a site at Gloddaeth St/ Maelgwyn Rd, Llandudno. The site lies within the Conwy County Borough Council (CCBC) administrative area. The development is to comprise 55 properties for Retirement Living (sheltered housing), 37 x 1 bed and 18 x2 bed apartments. The study was required to consider the need for retirement housing in light of the availability of owner occupier accommodation for the older population and forecast demographics and modelled need to support such provision.
- 1.2 This report puts forward detailed information on the supply of housing for older people in Conwy with additional consideration of the town of Llandudno. An undersupply of sheltered accommodation for sale is a key feature of the local market. The report describes the wider benefits of this type of provision, how it can meet the housing requirements of the Council and an important sector of the community and how it relates to the planning, housing and care policies of CCBC and its partners.
- 1.3. The study has been carried out in the context of national policy, evidence and good practice relating to meeting the housing needs of older people.
- 1.4. The study was undertaken in April and May 2021. It drew on published information sources including:
 - Age Friendly Wales: Our Strategy for an Ageing Society
 - A Healthier Wales Action Plan 2019
 - Planning Policy Wales 2021
 - Conwy Borough Council Corporate Plan 2017-22
 - Conwy local Development Plan 2007-2022
 - Conwy Replacement Development Plan 2018-2033 preferred strategy
 - Local Housing Strategy 2018-23
 - Conwy LHMA 2016-2021
- 1.5. We have also undertaken an analysis of older persons' housing demand and supply in Conwy and Llandudno using two of the methodologies recommended in "Housing in Later Life"¹: the Retirement Housing Group (RHG) model and the Contact Consulting model. Both these methodologies focus on demand from existing households and both suggest that potential demand for retirement housing for home ownership is higher than current provision.

¹ Housing in Later Life: planning ahead for specialist housing for older people, Housing LIN and others, December 2012

Definitions and Terminology

- 1.6. This report distinguishes between various types of specialist older persons' accommodation including:
 - a. Sheltered housing (otherwise known as Retirement Living) which offers support but not care
 - b. Enhanced Sheltered (sheltered accommodation where additional support and services can be provided)
 - c. Extra Care (including McCarthy and Stone Retirement Living Plus) which provides a wider range of care.

The Case for Development

- 1.7. **Older people living in specialist accommodation enjoy better health and make fewer demands on health and social care services. They feel more secure and enjoy improved quality of life.** Private retirement accommodation can meet the needs of many older people and can contribute to maintaining independence and minimising the health impacts of ageing hence keeping down the cost of care to individuals and to the local authority.
- 1.8. A Healthier Wales Action Plan 2019 recognises the importance of preventing illness in order to reduce demands on the health service and improve quality of life. In setting out Welsh Government's long term future ambitions it states that *"we will have a greater emphasis on preventing illness, supporting people to manage their own health and well being and on enabling people to live independently for as long as they can our Vision is everyone in Wales should have longer, healthier and happier lives, able to remain active and independent, in their own homes, for as long as possible"*².
- 1.9. **Planning Policy Wales 2021** states that **the planning system must enable provision of a range of well designed energy efficient good quality market and affordable housing that will contribute to the creation of sustainable places**³. In doing so, **planning authorities should specifically consider the differing needs of their communities including older people**⁴.
- 1.10. **Age Friendly Wales: Our Strategy for an Ageing Society Consultation Document December 2020 (Welsh Government)** recognises that suitable housing can become increasingly important as we age, our needs change and we spend more time at home.⁵ It states an ambition *"to provide housing in communities which enables older people, whatever their background, financial position or circumstances to fulfil their potential and lead meaningful lives"*⁶. Going forward supporting the growth of new housing models is identified as a key

² PP 3 and 4 A Healthier Wales Action Plan 2019

³ Para 4.2.2 Planning Policy Wales 2021

⁴ Para 4.2.5 Planning Policy Wales

⁵ P 17 Age Friendly Wales: Our Strategy for an Ageing Society Consultation Document December 2020, WG

⁶ P 18 Age Friendly Wales: Our Strategy for an Ageing Society Consultation Document December 2020, WG

priority area for housing and **Age Friendly Wales** states that “we will support the growth of new housing models that support people to age well. This will include contemporary sheltered housing and extra care housing”⁷.

Recent research by WPI Strategy Ltd for Homes for Later Living reported that

The UK has the oldest housing stock in Europe with 38% of our homes dating from before 1946 and 21% from before 1919. Older homes are often in a poor state of repair and have more dangers including cold, damp, fire risk and general fall hazards. They also tend to be lacking basic adaptations such as handrails in the shower and on the stairs as well as more substantial elements such as wider internal doors, stairlifts and walk-in showers. For less mobile older people these adaptations mean that everyday essential tasks like getting out of bed going to the bathroom or getting dressed are safer and more manageable, helping to support their independence. (p10)

A cold home can cause chronic and acute illnesses and lead to reduced mobility, falls and depression. In 2018 the House of Commons Housing, Communities and Local Government Committee heard there was a well evidenced link between cold homes and chronic diseases such as respiratory and cardiovascular diseases and rheumatoid arthritis and poor mental health. The Committee also heard that cold homes were connected to acute cases such as heart attacks, strokes and falls. (p13)

Around 1.5 million people aged 50 and over are always or often lonely and projections from Age UK suggest this could rise to 2 million people within the next 10 years. Older people who are lonely are more than three times more likely to suffer depression and 1.9 times more likely to develop dementia in the following 15 years. (p13).

The average person living in specialist housing for older people saves the NHS and social services £3,490 per year. This is because people living in specialist older persons housing are around half as likely to have falls. They are also far less likely to be lonely, making them significantly less likely to develop dementia and increasing the chance that if they suffer a stroke they will get the urgent medical attention they need. (p19)

Specialist older persons housing can help save the High Street. Given the majority of developments for later living are located on or close to a High Street there are also significant community benefits: businesses situated nearby can expect to feel the effects of the grey pound as residents regularly use shops and local facilities; organisations such as libraries, charity shops and community centres can also benefit. (p14)

⁷ P 19 Age Friendly Wales: Our Strategy for an Ageing Society

- 1.11. **There is a shortage of specialist older persons' housing for sale in Conwy. Depending on the methodology used for estimating demand, demand for sheltered housing for sale or shared equity is estimated to be in a range between 695 and 1,028 units. Provision of the proposed scheme of 55 units for sale will help to reduce the shortfall. It can free up family housing which is currently under-occupied.**
- 1.12. A substantial proportion of Conwy's housing stock is unsuitable for older people due to design or condition and the Housing Strategy highlights that around 35% of properties are rated E or below on their energy efficiency rating. These factors become more significant for older people as their health, mobility and financial situation change.
- 1.13 **The Council recognises older people as an important group whose needs should be planned for.** The emerging Local Development Plan – Preferred Strategy, states that *“the age structure of the County Borough is significantly older than that for Wales with 27.2% of the population aged 65 and over”*⁸ and highlights that this *“has implications on the type, mix and size of housing required to take account of smaller households and adapted living for the elderly”*⁹.
- 1.14 In the Preferred Strategy, Strategic Policy 5 (SP/5): Placemaking and Good Design states that to contribute to Sustainable Placemaking, development proposals should (inter alia), *“address ‘Access and Inclusivity’ for all by making provision to meet the needs of people with sensory, memory, learning and mobility impairments, older people and people with young children”*¹⁰.
- 1.15 One of the key objectives of the Housing Strategy is *“to ensure that housing support is available to members of our communities with particular housing needs”*¹¹ and also *“to ensure that the housing needs of older people are fully understood and a range of housing options is available”*¹²
- 1.16 **The supply of specialist accommodation for home ownership in Conwy and Llandudno is extremely limited in comparison with demand. Council policies to date have missed the opportunity to plan for specialist housing for older owner occupiers.**
- 1.17 Llandudno is a settlement identified by the Council as a suitable location for development¹³.
- 1.18 **Whichever aspect of this issue is considered, there is a clear and unmet need for a range of specialist retirement housing options for local people, primarily home owners.**
- 1.19 **The proposed McCarthy and Stone Retirement Living scheme can make a positive contribution to meeting this need.**

⁸ P19 Conwy Replacement Development Plan 2018-2033 preferred strategy

⁹ P21 Conwy Replacement Development Plan 2018-2033 preferred strategy

¹⁰ P66 Conwy Replacement Development Plan 2018-2033 preferred strategy

¹¹ P2 Local Housing Strategy 2018-23

¹² P3 Local Housing Strategy 2018-23

¹³ Policy DP/2 Conwy local Development Plan 2007-2022

2. LOCAL POLICY CONTEXT

- 2.1 This section considers the policies and the evidence base relevant to the provision of Retirement Living accommodation in the Conwy County Borough Council (CCBC) area.
- 2.2 Conwy is a Unitary Authority and CCBC has statutory responsibility for Housing and Planning as well as Adult Social Care. Health is the responsibility of Betsi Cadwaladr University Health Board and the North Wales NHS Trust.
- 2.3 This report has been prepared with reference to the following strategies, policies and plans published by CCBC and its partners:
- Age Friendly Wales: Our Strategy for an Ageing Society
 - A Healthier Wales Action Plan 2019
 - Planning Policy Wales 2021
 - Conwy County Borough Council Corporate Plan 2017-22
 - Conwy Local Development Plan 2007-2022
 - Conwy Replacement Development Plan 2018-2033 preferred strategy
 - Local Housing Strategy 2018-23
 - Conwy Local Housing Market Assessment 2016-2021

District Profile

- 2.4 Conwy is a predominantly rural area, rich in historic assets. It has a buoyant tourism industry, excellent transport links and a high quality natural environment¹⁴. The district is predominantly rural with major settlements in Llandudno, Llandudno Junction, Llanrwst, Betws-y-Coed, Conwy, Colwyn Bay, Abergel, Pemmaenmawr, and Llangfairfechan.
- 2.5 The Replacement Development Plan Preferred Strategy reports the age profile of the District's population as significantly older than that for Wales with 27.2% of the population aged 65 and over¹⁵.
- 2.6 Data from the 2011 Census¹⁶ shows that 80% of households aged 65 and over were home owners.
- 2.7 Llandudno is one of the main urban settlements within the Coastal Development Strategy Area, Creuddynn. The Replacement Local Development Plan 2018-33 suggests that 30% of new housing development will be located in the Coastal Development Strategy Area.

Corporate Plan 2017-2022

¹⁴ Para 1.1.1 Local Development Plan 2007-22

¹⁵ P19 Conwy Replacement Development Plan 2018-2033 preferred strategy

¹⁶ DC4201EW - Tenure by ethnic group by age - Household Reference Persons

- 2.8 One of the priorities of the Corporate Plan for CCBC is for *“residents to live in accommodation that supports their positive health and well-being”*¹⁷. The council describes its strategic approach to this priority which focusses on *“aiming to have the right mix of accommodation in the right areas so that people will live in communities they are proud to call home”*¹⁸. One of the ways it plans to achieve this is through working with private developers to increase the supply of appropriate market housing¹⁹.
- 2.9 The Council also states that it wishes to develop new models to promote health and well being so that people of all ages are less reliant on health and social care. It will achieve this by working collaboratively and looking at future trends²⁰.

Planning Policy and Performance

Local Plan/Core Strategy

- 2.10 Conwy Local Development Plan, adopted October 2013, is the current statutory development plan for the CCBC area and sets out the strategic policies for development and conservation of the district up to 2022. CCBC has started working towards a new Local Plan for the district and the council consulted upon its preferred strategy in 2019. According to the Conwy Delivery Agreement 2018²¹, adoption of the Local Plan is scheduled for September 2021. However the May 2020 newsletter²² notes that one of the impacts of Covid-19 is to delay the process and a new timetable will be agreed with Welsh Government. The council continues to work on its evidence base.
- 2.11 The current Local Development Plan seeks to address the housing issues that remain a *“key area of concern for many communities within the Plan Area”*²³, stating that *“the shortage of affordable housing to rent or to buy is one of the greater challenges facing many communities in Conwy”*²⁴. It identifies that an annual average of 478 new homes is required in CCBC during the period 2007 to 2022 with 85% of new homes to be allocated to the Urban Development Strategy Area which includes Llandudno²⁵. The emerging ‘Replacement Development Plan 2018-2033 – Preferred Strategy’ identifies a lower requirement of 290 new homes per annum²⁶.
- 2.12 In the current Local development Plan, the town of Llandudno is one of the twelve most sustainable areas identified to accommodate housing growth: it is defined in DP/2: Overarching Strategic Growth as an ‘urban area’. The policy states that most *“development (through completions, commitments, windfall and new allocations) will be located primarily*

¹⁷ P6 & 14 CCBC Corporate Plan 2017-22

¹⁸ P14 CCBC Corporate Plan 2017-22

¹⁹ P15 CCBC Corporate Plan 2017-22

²⁰ P 17 CCBC Corporate Plan 2017-22

²¹ Conwy Delivery Agreement May 2018

²² From website <https://www.conwy.gov.uk/en/Resident/Planning-Building-Control-and-Conservation/Replacement-LDP/Replacement-Local-Development-Plan.aspx>

²³ Para 4.2.2.1 Conwy local Development Plan 2007-2022

²⁴ Para 4.2.2.1 Conwy local Development Plan 2007-2022

²⁵ Policy HOU/1 Conwy local Development Plan 2007-2022

²⁶ Para 3.3.3 Conwy Replacement Development Plan 2018-2033 preferred strategy

within, and on the fringe of, the urban areas to reflect the spatial priorities of contributing to the creation of sustainable communities"²⁷. In the Preferred Strategy, Llandudno is identified as a main urban settlement within the Creuddyn coastal area projected to receive approximately 30% of the housing growth over the Plan period²⁸.

Consideration of Older People in Current Planning Policy

- 2.13 The current Local development Plan recognises that older people are an important group whose needs should be planned for. It is however concerned that *"young people move from the area, to be replaced by older people moving in"*²⁹ and seeks to promote a balanced age structure. There is little mention of the range of specialist accommodation that local older people might seek, apart from residential care homes, although Policy Hou/11: Residential Care Homes and Extra Care Housing references the contribution that Extra care housing can make to affordable provision³⁰.
- 2.14 The Preferred Strategy again highlights that *"the age structure of the County Borough is significantly older than that for Wales with 27.2% of the population aged 65 and over, which places pressure on public and social services"* although by the mid-2030s, *"Conwy will see a decrease in the older age groups (particularly aged 75+)"*³¹. This *"has implications on the type, mix and size of housing required to take account of smaller households and adapted living for the elderly"*³².
- 2.15 The Preferred Strategy goes on to say that CCBC will, in planning for a housing mix that takes account of smaller households and adapted living for the elderly, it will apply the findings of *"the Conwy Local Housing Market Assessment (which) suggests that 35% of housing supply should accommodate 1 & 2 bed properties"*³³. Strategic Policy 5 (SP/5): Placemaking and Good Design states that to contribute to Sustainable Placemaking, development proposals should (inter alia), *"address 'Access and Inclusivity' for all by making provision to meet the needs of people with sensory, memory, learning and mobility impairments, older people and people with young children"*³⁴.
- 2.16 The Preferred Strategy states that by 2033, *"Conwy will offer greater opportunities to live, work and visit. A good quality of life will be offered to all, supporting the diversity of Conwy's people and places. older people of Conwy will be encouraged to lead active, healthy and fulfilling lives into old age"*³⁵. An open market sheltered scheme, providing self-contained, independent accommodation in Llandudno, a settlement recognised by the Council as a location suitable for housing growth can assist in delivering the Core Strategy objectives and policies.

²⁷ Policy DP/2 Conwy Local Development Plan 2007-2022

²⁸ Para 2.40 Conwy Replacement Development Plan 2018-2033 preferred strategy

²⁹ Para 4.2.2.1 Conwy local Development Plan 2007-2022

³⁰ Para 4.2.26.4 Conwy local Development Plan 2007-2022

³¹ P19 Conwy Replacement Development Plan 2018-2033 preferred strategy

³² P21 Conwy Replacement Development Plan 2018-2033 preferred strategy

³³ Para 2.31 Conwy Replacement Development Plan 2018-2033 preferred strategy

³⁴ P66 Conwy Replacement Development Plan 2018-2033 preferred strategy

³⁵ P30 Conwy Replacement Development Plan 2018-2033 preferred strategy

Conwy Borough Local Plan Authority Monitoring Report (AMR) 2018/2019

- 2.17 Reporting on the Council's housing supply target, the AMR makes clear that housing delivery against the Local Development Plan is "significantly below target". It reports 301 housing completions for the monitoring year 2018/2019 against an annual requirement of 548, a shortfall of 247.
- 2.18 No Core Strategy indicators were set or monitored with specific reference to delivery of housing for older people.

Local Housing Priorities

Local Housing Strategy 2018-23

- 2.19 As stated above, it is a corporate priority for CCBC that Conwy should be a place where people's housing needs are addressed. Corporate Objective 3 states that people should have access to affordable appropriate good quality accommodation that enhances the quality of their lives and sets a subsidiary target that residents should live in accommodation that supports their positive health and well-being.³⁶ This premise forms the basis of the Local Housing Strategy.
- 2.20 The Local Housing Strategy defines "What does a Quality Home Look Like?"
- *It is the right size and layout*
 - *It is in the right community, close to amenities, work opportunities, family and friends*
 - *It is secure both physically and in terms of whether we can continue to live there*
 - *It is warm and safe, and isn't going to injure us or cause us health problems*
 - *It is affordable, and we have enough money to pay for it*
 - *It has the right level of support around it for the bad days when we need help and*
 - *Enables us to live life to the full".³⁷*
- 2.21 **This is precisely the type of accommodation which can be found in a McCarthy and Stone Retirement Living Scheme.**
- 2.22 The Strategy sets as key objectives "to ensure that housing support is available to members of our communities with particular housing needs"³⁸ and also "to ensure that the housing needs of older people are fully understood and a range of housing options is available"³⁹
- 2.23 The Housing Strategy references the North Wales Population Needs Assessment which identifies older people as a priority group. It has shown that there is a need for more specialist housing⁴⁰ and through the Older Peoples Housing Strategy⁴¹ the council aims to

³⁶ CCBC Corporate Plan 2017-22 Technical Document p6

³⁷ P2 Local Housing Strategy 2018-23

³⁸ P2 Local Housing Strategy 2018-23

³⁹ P3 Local Housing Strategy 2018-23

⁴⁰P27 Appendix A Local Housing Strategy 2018-23

⁴¹ We have not been able to trace this document

ensure that the accommodation needs of older people are being met and ensure older people have choice when making a decision about their housing⁴².

- 2.24 The Strategy points out that *“the vast majority of Conwy’s housing stock is older traditionally constructed and predominantly privately owned. An estimated 35% of properties are rated E or below on their energy efficiency rating and there is significant potential to upgrade the energy efficiency of properties within the private sector”*⁴³. This suggests that many older people in the private sector are living in homes which are difficult to heat, with a corresponding potential negative impact on their health.

Conwy Local Housing Market Assessment (LHMA) 2016 – 2021 (published 2018)

- 2.25 The LHMA identifying housing market drivers and policy implications across Conwy Borough presents evidence that CCBC’s population grew by 3.4% between 2005 and 2015⁴⁴. The population is expected to increase by 8.4% by 2036⁴⁵. The LHMA notes the 2011 census population breakdown showing that nearly 25% of the borough’s population is aged 65 and over⁴⁶ and goes on to set out projections for an increase in the older population to nearly 35% of the population by 2035⁴⁷. In response the LHMA sets out that

*“Conwy’s population is ageing as the proportion of older people increases and our younger population decreases. In response to this future housing delivery must take into account the needs of these different age groups”*⁴⁸.

- 2.26 In commenting on the overall population growth the LHMA observes that the majority of this growth is in single person households, stating that this *“is not unique to Conwy, but is more pronounced due to our older population, 63% of our single person households are pensioners, and this is projected to rise to 74% by 2036”*⁴⁹. The LHMA is clear that this demographic shift towards an older population is a result of improved mortality rates alongside the aging of the ‘baby boomer’ generation, rather than in-migration⁵⁰.

- 2.27 **The LHMA presents clear evidence that housing growth, and hence demand, for older persons housing is high.**

⁴² P21 Local Housing Strategy 2018-23

⁴³ P22 Local Housing Strategy 2018-23

⁴⁴ P36 table 15 Conwy LHMA 2016-2021

⁴⁵ P51 Conwy LHMA 2016-2021

⁴⁶ (24.4% P35 table 14 LHMA 2016-2021

⁴⁷ (34.8%) P37 table 16 Conwy LHMA 2016-2021

⁴⁸ P37 Conwy LHMA 2016-2021

⁴⁹ P51 Conwy LHMA 2016-2021

⁵⁰ P49 Conwy LHMA 2016-2021

Supply of Specialist Housing to Meet Need

2.28 The current Elderly Accommodation Counsel (EAC) database of retirement accommodation data for Conwy is presented in Table 2.1. The EAC lists 2,929 units of specialist retirement housing with care or support in the CCBC area, of which just over 31% (917 units) were for sale. The level of supply – 179 units per 1,000 population aged 75 and over across all tenures - is skewed towards social rented accommodation. **Choices for older homeowners are limited with provision of sheltered and Extra Care housing for sale being disproportionately low.**

Table 2.1. Specialist housing provision for older people - Data for Conwy

	Population aged 75+ (thousands)	Units of housing with support or care - rent	% for all housing with support or care	Units of housing with support or care - sale	% for all housing with support or care	Total units of housing with support or care	Units per 1000 of pop'n aged 75+
Conwy Borough Council	16.34	2,012	68.7%	917	31.3%	2,929	179.3

Figures in bold given here are based on the Welsh Government 2018 Population Projections by LA & Year <https://www.ons.gov.uk/peoplepopulationandcommunity/populationandmigration/populationprojections/datasets/localauthoritiesinenglandtable2>

Local Issues – Llandudno

Local Supply Available for Sale

2.34 The current total supply of accommodation in Llandudno is set out in Table 3.5 in Chapter 3 and summarized below. According to the EAC there are 327 age exclusive and sheltered properties listed for sale and 6 for rent in Llandudno Town and the surrounding wards⁵¹.

2.35 Analysis of Rightmove data of specialist retirement properties available for sale in Llandudno⁵² carried out on 7th May 2021 showed a total of 33 properties:

- 20 x 1bed in the price range £60,000 to £175,000 (average price of £90,000)
- 13 x 2bed in the price range £87,000 to £170,000 (average price of £127,000)

⁵¹ Defined as the wards of Craig-y-Don, Deganwy, Gogarth, Llandrillo yn Rhos, Marl, Mostyn, Penrhyn, Pensar and Tudno

⁵² <https://www.rightmove.co.uk/property-for-sale/find.html?locationIdentifier=REGION%5E824&maxBedrooms=2&index=24&propertyTypes=flat&primaryDisplayPropertyType=flats&mustHave=retirement&dontShow=&furnishTypes=&keywords=>

Conclusions

- 2.39 The strategies and policies of CCBC and its partners show awareness of the housing needs of older people as an issue of increasing importance. Policies recognise the need for more accommodation suitable for older people but overlook the potential of specialist accommodation for home ownership to enable people to find their own solutions to their accommodation and support needs.
- 2.40 The population of Conwy ageing. Despite a high level of owner occupation among older households and a preference to continue in home ownership, there is an oversupply of social rented sheltered accommodation and an undersupply of sheltered accommodation for home ownership.
- 2.41 The proposed development at the site on Gloddaeth St/Maelgwyn Road will provide accommodation which is better suited to the needs of older people and can assist CCBC in delivering on its priorities. Accessible and built to high standards of insulation, the properties will be less costly to heat than older, larger homes, thereby helping to deliver affordable warmth. They will also help to reduce loneliness and minimise the risk of falls.

DRAFT

3. FORECASTING SPECIALIST HOUSING DEMAND IN CONWY BOROUGH COUNCIL

- 3.1 We have modelled potential demand for specialist retirement housing in Conwy County Borough Council (CCBC) using two different approaches: the Retirement Housing Group (RHG) Model and the Contact Consulting Model, both of which are recommended in “Housing in Later Life⁵³.”
- 3.2 Currently in England an estimated **8% of households aged 65 and over live in specialist retirement housing (515,666 dwellings)⁵⁴. A comparable figure for Wales is 5.5%⁵⁵** Research for the Housing Lin⁵⁶ suggests that, based on comparisons with the USA and Australia where the stock of older persons’ housing is higher and those people who wish to live in specialist accommodation have a practical option to do so, the proportion of older person households moving into specialist retirement housing could be as high as 13-17%. Analysis of SHMA findings from surveys of over 13,500 households aged 50 plus suggests that around 20% of all older households would consider moving to specialist retirement housing if it was available.
- 3.3 A number of approaches exist which estimate demand for specialist housing for older people. Planning for the Right Homes in the Right Places⁵⁷ consulted on a proposed standard methodology for housing needs assessment at local authority level. Confirming that assessing the needs of older people will continue to be required, the consultation sought additional views on how this should be approached. Pending the introduction of a standard methodology, the models described here are based on clear assumptions. The RHG model uses household data rather than population figures and so may be less likely to overstate demand. It makes a realistic assessment of demand for different tenures based on Census data on tenure among older people.

The RHG model

- 3.4 The RHG model is based on propensity to move. It assumes that 17.5% of older person households (age 75 and over) would live in retirement housing if it was available⁵⁸ Analysis of residents in McCarthy and Stone properties shows that a small proportion (18%) of all residents are aged under 75. If we assume that this is the normal age distribution of households in each age group living in retirement housing and we compare the total number of households in each in each age group living in retirement housing with those living in the general housing stock, then an estimated 2.5% of households aged 65 to 74 would live in retirement housing if it was available in their area and their chosen tenure.

⁵³ Housing Lin <http://www.housinglin.org.uk/Topics/type/resource/?cid=8654>

⁵⁴ Based on a comparison of the total number of specialist older persons housing units at July 2015 (Source EAC) with the total number of households aged 65 and over taken from Household projections England 2012 table 414 <https://www.gov.uk/government/statistical-data-sets/live-tables-on-household-projections>

⁵⁵ Three Dragons estimate based on StatsWales data on age distribution of population by Gender and Year (2018) and EAC data on supply of specialist retirement housing for 2018

⁵⁶ “Downsizing for older people into Specialist Accommodation” Janet Sutherland for Housing LIN February 2011

⁵⁷ DCLG, September 2017

⁵⁸ Michael Ball: Housing Markets and Independence in Old Age fig 4.7

The RHG model therefore assumes that 17.5% of households aged 75 and over and 2.5% of households aged 65 to 74 would live in retirement housing if it was available.

- 3.5 The RHG model analyses potential demand for specialist older persons' accommodation by tenure working on the assumption that social and private renters require affordable rented retirement housing and that home owners require outright sale or shared equity accommodation. ONS Census data from 2011 rolled forward to 2023⁵⁹ shows 80.2% of households in the County of Conwy aged 75-84 and 81.0% of households aged 85 and over are home owners).

The Contact Consulting Model

- 3.6 The Contact Consulting Model⁶⁰ is based on anticipated levels of care or support needs among older persons. Drawing on data relating to limiting long term illness (LLTI) and difficulty in performing personal care and household tasks, it establishes norms for people who have assessable support and care needs, estimating that 251 per thousand people aged 75 and over would benefit from a move to specialised housing. The estimate of 251 persons per thousand population is then applied to households on the same basis (i.e. 25%)⁶¹.
- 3.7 Care and support needs and the ability to manage LLTI conditions within this group will differ and requires a range of different solutions. This model provides a more detailed breakdown of demand by type of specialist housing required, distinguishing between:
- Sheltered housing for rent and sale
 - Enhanced sheltered housing for rent and sale
 - Extra Care housing for rent and sale
 - Dementia housing.
- 3.8 We have undertaken the analysis using the figure of 80.6% home ownership among households aged 75 and over from the 2011 Census data.

Results from the RHG Model

- 3.9 Table 3.1 shows potential demand for specialist older persons' housing provision in CCBC using the RHG Model at 17.5% of older person households (aged 75+) and 2.5% of households aged 65-74. The table is based on projected household data for 2023 (the earliest date by which a McCarthy and Stone scheme in Llandudno is likely to be available). **2,335 existing households require specialist retirement housing⁶².**

⁵⁹ We have applied home ownership ratios for households aged 65-74 in 2011 are 75-84 in 2023 and households aged 75-85 are 85 and over in 2023.

⁶⁰ Detailed information about how the model operates can be found in "Housing in Later Life"

⁶¹ The Contact Consulting model forms the basis for the Housing LIN/ADASS Strategic Housing for Older People (SHOP) Resource Pack and SHOP@ analysis tool produced by the Housing LIN and endorsed by the Department of Health

⁶² Data on household projections by age is based on the 2018 based population projections by age adjusted by data on average household size by age of household in Wales <https://statswales.gov.wales/Catalogue/Population-and-Migration/Population/Projections/Local-Authority/2018-based/populationprojections-by-localauthority-year>

Table 3.1. RHG model potential demand for specialist older persons housing 2023

RHG MODEL @ 17.5% 2023				
Household age	Aged 65-74	Aged 75-84	Aged 85+	Total
No of households (Source: StatsWales, Popn proj by age and year, Av hh size by age, Wales)	9,825	8,401	3,539	21,764
Requiring specialist retirement housing	2.50%	17.5%	17.5%	
RHG model estimate of potential demand from existing households	246	1,470	619	2,335
Requiring home ownership - based on proportion of home owners in 2011 Census	77%	80%	81%	
RHG model estimate of demand for home ownership	188	1,179	501	1,869
Assume all under 75s and 72% of 75 and over require sheltered with support (1)	188	849	361	1,398
Current and potential supply of retirement housing (age exclusive & sheltered) for sale (2)				703
Requirement for newbuild sheltered for sale				695
Current and potential supply of extra care & enhanced sheltered for sale				214
Requirement for newbuild extra care for sale				257

Note 1: Contact Consulting percentage of households requiring Sheltered Housing

- 3.10 The 2011 Census for CCBC provides data on tenure by age. We have used this data to calculate the proportion of older person households requiring home ownership. It is therefore anticipated that of the 2,335 older person households who might require older persons housing, 1,869 households will require sale or shared equity housing. If the Contact Consulting split between sheltered and enhanced sheltered/Extra Care (72:28) for over 75s was applied to this figure then potential demand for sheltered housing for home ownership is 1,398 units

3.11 Current supply of older persons accommodation in CCBC⁶³ is 917 sale units (108 of which are Age Exclusive, 595 of which are housing with support and 214 housing with care), 1,903 social rented units (738 of which are Age Exclusive, 1,031 of which are housing with support and 134 housing with care). There are also 94 market rent units with support and 15 market rent units with care. Total specialist older persons housing amounts to 2,929 units. The RHG model would suggest that **there is an overall shortfall of 695 sheltered for sale units including a requirement for shared equity-**

Results from the Contact Consulting Model

3.12 We have used the Contact Consulting methodology as outlined in “Housing in later life” to provide an alternative estimate of potential demand for specialist housing for older people, including a more detailed estimate by type of specialist accommodation required. This looks at total population aged 75 and over and makes estimates of demand for a range of types of specialist housing based on frailty and inability to perform routine domestic and personal care tasks. It assumes that 251 persons per thousand will require specialist accommodation. When expressed as the same percentage of households (25%) this indicates demand for **2,997 units of specialist older persons accommodation.**

3.13 **Using 2011 Census data on tenure for CCBC** the Contact Consulting methodology suggests that there is potential demand for 1,731 units for sheltered housing for home ownership or shared equity purchase compared with current supply of 703 units: **a shortfall of 1,028 units** (see Table 3.2 below).

3.14 There is a surplus of sheltered housing for rent.

Table 3.2. Contact Consulting Model: Potential demand for older persons accommodation –

		<i>Current & potential</i>	Increase or decrease required	Target number of units	Target provision 2,997
Sheltered & Age Exclusive	Rent	1,863	-1,445	418	35
	Sale/SE	703	1,028	1,731	145
Enhanced Sheltered	Rent	15	31	46	4
	Sale/SE	116	76	192	16
Extra Care	Rent	134	-30	104	9
	Sale/SE	98	335	433	36
Dementia Housing		0	72	72	6
TOTAL		2,929		2,997	251

(Note figures may not add due to rounding)

⁶³ Based on EAC data for supply Conwy Borough Council taken from the EAC Housing Care website at www.HousingCare.org/housing-care/search 06/04/2021

Housing Supply and Demand in Llandudno

3.15 It is possible to compare the situation in Llandudno and the surrounding area (see Figures 3.3 and 3.4 below) with that in the wider Conwy area.

Figure 3.3. Wards Selected Llandudno

Selection of areas

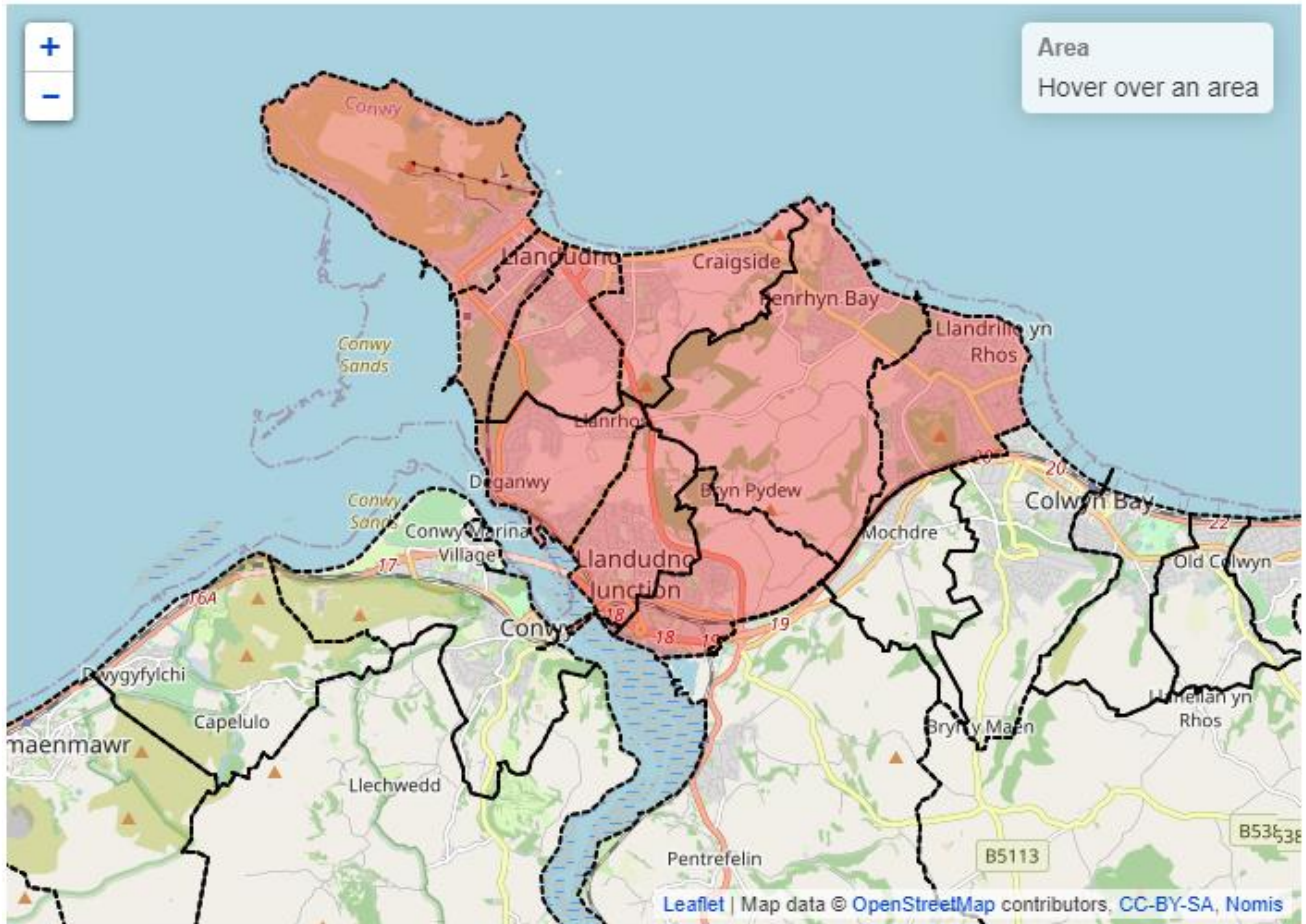


Figure 3.4. Details of Wards Selected

Ward Ref	Name	Ward Ref	Name
W3900111	Craig-y-Don	W3900129	Mostyn
W3900113	Deganwy	W3900132	Penrhyn
W3900118	Gogarth	W3900133	Pensarn
W3900122	Llandrillo yn Rhos	W3900138	Tudno
W3900127	Marl		

3.16 According to the 2011 Census there were 7,083 older person households (aged 65 and over) living in the Llandudno area as identified above, compared with 18,303 older person households living in CCBC (i.e. older person households in Llandudno accounted for 38.7% of all older person households in CCBC). The proportion of older homeowners in Llandudno

was 78.2%, slightly lower than the proportion for the CCBC area as a whole, which was 78.6%.

- 3.17 Using the predicted household figures for CCBC for 2023, we have calculated the number of forecast households by age for Llandudno. Using the same modelling principles as used for CCBC to predict demand for specialist older persons housing in Llandudno.
- 3.18 The RHG model shows that 538 households will require sheltered housing for sale or shared equity in Llandudno. There is a current local supply of 327 units, leaving a shortfall of 211 units of sheltered housing for sale or shared equity. The Contact Consulting model (using 2011 tenure splits) shows demand for an additional 341 units of retirement housing for sale or shared equity in Llandudno. See figures 3.4 and 3.5 below.

Figure 3.4 RHG Model for Llandudno

RHG MODEL @ 17.5% 2023				
Household age	Aged 65-74	Aged 75-84	Aged 85+	Total
No of households <i>(Source: StatsWales, Popn proj by age and year, Av hh size by age, Wales)</i>	3,802	3,251	1,369	8,423
Requiring specialist retirement housing	2.50%	17.5%	17.5%	
RHG model estimate of potential demand from existing households	95	569	240	904
Requiring home ownership - based on proportion of home owners in 2011 Census	76%	79%	81%	
RHG model estimate of demand for home ownership	72	452	195	719
Assume all under 75s and 72% of 75 and over require sheltered with support (1)	72	326	140	538
Current and potential supply of retirement housing (age exclusive & sheltered) for sale (2)				327
Requirement for newbuild sheltered for sale				211
Current and potential supply of extra care & enhanced sheltered for sale				89
Requirement for newbuild extra care for sale				92

Figure 3.5 Contact Consulting Model - Llandudno

		<i>Current & potential</i>	Increase or decrease required	Target number of units	Target provision 1,160
Sheltered & Age Exclusive	Rent	6	158	164	35
	Sale/SE	327	341	668	145
Enhanced Sheltered	Rent	23	-5	18	4
	Sale/SE	66	8	74	16
Extra Care	Rent	0	41	41	9
	Sale/SE	23	144	167	36
Dementia Housing		0	28	28	6
TOTAL		445		1,160	251

3.19 We would always advise caution in considering data at local level as it may not take into consideration factors unknown to the researchers which may affect older residents' decisions and behaviour in relation to moving home.

Conclusions

3.20 We have appraised potential demand for specialist retirement housing using two alternative models, one of which is driven by the scale of potential need from persons who would potentially benefit from a move to specialised housing, the other looking at propensity to move by age group.

- The RHG model suggests a need for **695** units of sheltered housing for sale or shared equity in Conwy.
- The Contact Consulting model points to a need for **1,028** units of sheltered housing for sale or shared equity using the current (2011) tenure split for Conwy.
- At ward level, the RHG model indicates a **need for 211 units of sheltered housing for sale or shared ownership**. The Contact Consulting model indicates a need for **341 units of sheltered housing for sale or shared ownership**.

APPENDIX 1 STOCK OF SPECIALIST OLDER PERSONS HOUSING 6TH APRIL 2021

Age Exclusive Housing

Type	Name	Location	Postcode	Dwgs	Type	Accom	Tenure
Age Exclusive	Allerton Court	Deganwy	LL31 9SA	30	1 bed	Flats	Social landlord
Age Exclusive	Bodtegwel Terrace	Abergele	LL22 9BH	4	1 bed	bungalows	Social landlord
Age Exclusive	Bro Geirionydd	Conwy	LL27 0JE	4	2 bed	bungalows	Social landlord
Age Exclusive	Bro Gethin	Betwys-y-Coed	LL24 0BT	8	1 bed	flats	Social landlord
Age Exclusive	Bronault	Denbigh	LL16 5RT	12	1 & 2 bed	bungalows	Social landlord
Age Exclusive	Bron-y-Waun	Betwys-y-Coed	LL24 0YN	5	2 bed	bungalows	Social landlord
Age Exclusive	Bryn Awelon	Abergele	LL22 8FA	10	2 bed	Flats	Leasehold
Age Exclusive	Bryn Cynfal	Betwys-y-Coed	LL24 0NS	4	2 bed	bungalows	Social landlord
Age Exclusive	Bryn Difyr	Penmaenmawr	LL34 6AH	13	1 & 2 bed	flats & Bungalows	Social landlord
Age Exclusive	Bryn Morfa	Conwy	LL32 8JW	6	2 bed	bungalows	Social landlord
Age Exclusive	Bryn Tirion	Conwy	LL32 8QD	3	2 bed	bungalows	Social landlord
Age Exclusive	Cae Bronydd	Llanrwst	LL26 0BA	10	1 bed	bungalows	Social landlord
Age Exclusive	Cwrt Cae Mor	Abergele	LL22 9PD	32	1 & 2 bed	flats	Social landlord
Age Exclusive	Ddol Ddu	Colwyn Bay	LL29 8YH	8	1 bed	bungalows	Social landlord
Age Exclusive	Ger-y-Mor	Abergele	LL22 7PX	32	1 & 2 bed	flats & Bungalows	Social landlord
Age Exclusive	Glan-y-fedw	Conwy	LL22 8AP	17	1 & 2 bed	bungalows	Social landlord
Age Exclusive	Gorwel	Abergele	LL22 7PB	26	1 bed	bungalows	Social landlord
Age Exclusive	Groes Road	Colwyn Bay	LL29 8YW	10	1 & 2 bed	bungalows	Social landlord
Age Exclusive	Gwelfryn	Mochdre	LL28 5BA	11	1 & 2 bed	bungalows	Social landlord
Age Exclusive	Hafan Gogarth	Llandudno	LL30 2ET	35	2 bed	flats	Leasehold
Age Exclusive	Heather Close	Colwyn Bay	LL29 9DW	8	1 bed	bungalows	Social landlord
Age Exclusive	Kyffin Close	Colwyn Bay	LL29 9TN	16	1 bed	flats	Social landlord
Age Exclusive	Llain Deri	Colwyn Bay	LL29 7BU	18	1 bed	flats	Social landlord
Age Exclusive	Llwyn-y-Gog	Llanfairfechan	LL33 0UU	10	2 bed	bungalows	Social landlord
Age Exclusive	Llys Arfon	Colwyn Bay	LL29 8AS	12	1 & 2 bed	flats	Social landlord
Age Exclusive	Llys Caradoc	Abergele	LL22 9PG	3	1 bed	bungalows	Social landlord
Age Exclusive	Llys Clwyd	Penmaenmawr	LL34 6AF	12	1 bed	flats	Social landlord
Age Exclusive	Llys Ednyfed	Mochdre	LL28 5EG	10	1 & 2 bed	flats	Social landlord
Age Exclusive	Llys Ednyfed	Mochdre	LL28 5EG	10	1 & 2 bed	flats	Leasehold
Age Exclusive	Llys Gele	Abergele	LL22 7LF	12	1 bed	flats	Social landlord
Age Exclusive	Llys Hafan	Rhos on Sea	LL28 4EY	14	1 & 2 bed	flats	Leasehold
Age Exclusive	Llys Janet	Colwyn Bay	LL29 9RR	10	1 bed	flats	Social landlord
Age Exclusive	Llys Madoc	Colwyn Bay	LL29 9LU	20	1 & 2 bed	flats	Social landlord
Age Exclusive	Llys Wyn & St Monicas	Colwyn Bay	LL29 9RW	8	1 bed	flats	Social landlord
Age Exclusive	Lon Cymru	Llandudno	LL30 1SJ	6	1 bed	bungalows	Social landlord
Age Exclusive	Maes Aled & Maes y Fynnon	Conwy	LL21 9UE	34	1 & 2 bed	bungalows	Social landlord
Age Exclusive	Maes Aled, Creiniog & Ffordd Cogor	Denbigh	LL16 5HT	22	1 & 2 bed	bungalows	Social landlord
Age Exclusive	Maes Cynbryd	Abergele	LL22 8HF	9	1 bed	flats & Bungalows	Social landlord
Age Exclusive	Maes Hyfryd	Conwy	LL28 5NE	5	1 bed	bungalows	Social landlord
Age Exclusive	Maes Llan	Colwyn Bay	LL28 5UB	7	2 bed	bungalows	Social landlord
Age Exclusive	Maes Llydan	Llanrwst	LL26 0RN	6	2 bed	bungalows	Social landlord
Age Exclusive	Maes Refail	Conwy	LL32 8YH	6	2 bed	bungalows	Social landlord
Age Exclusive	Maes-y-Berllan	Llanrwst	LL26 0SG	3	2 bed	bungalows	Social landlord
Age Exclusive	Maes-y-Foel	Abergele	LL22 8ED	5	1 & 2 bed	bungalows	Social landlord
Age Exclusive	Maes-y-Glyn	Colwyn Bay	LL29 8RE	6	1 bed	bungalows	Social landlord
Age Exclusive	Metropole	Colwyn Bay	LL29 8AR	36	1 & 2 bed	flats	Social landlord
Age Exclusive	Minafon Flats	Colwyn Bay	LL29 9UF	34	1 bed	flats	Social landlord
Age Exclusive	Mona Road	Conwy	LL32 8HF	6	2 bed	bungalows	Social landlord
Age Exclusive	Morfa Gardens/Gerddi Morfa	Conwy	LL32 8QL	24	1 & 2 bed	flats	Social landlord
Age Exclusive	Pen-y-dorlan	Colwyn Bay	LL29 8FQ	8	1 & 2 bed	flats	Social landlord
Age Exclusive	Plas Foryd	Rhyl	LL18 5BQ	25	1 & 2 bed	flats	Social landlord
Age Exclusive	Plas Heulog	Colwyn Bay	LL29 9TH	8	2 bed	flats	Leasehold
Age Exclusive	Plas Mariandir	Llanrhos	LL30 1NB	31	1 & 2 bed	flats	Leasehold
Age Exclusive	Plas Wylfa	Colwyn Bay	LL29 9PS	14	1 & 2 bed	flats	Social landlord
Age Exclusive	Plas Wyn	Colwyn Bay	LL29 9PR	11	1 bed	flats	Social landlord
Age Exclusive	Plas-y-Berth	Llanfairfechan	LL33 0NU	22	1 bed	Flats	Social landlord
Age Exclusive	Queensway	Colwyn Bay	LL29 9ED	6	1 bed	bungalows	Social landlord
Age Exclusive	unknown	Llanfair Talhalam	LL22 8RY	24	1 & 2 bed	bungalows	Social landlord
Age Exclusive	Tanrallt	Dolwyddelan	LL25 0RJ	4	1 bed	bungalows	Social landlord
Age Exclusive	Ty Llewelyn	Colwyn Bay	LL29 7AS	11	1 & 2 bed	flats	Social landlord
Age Exclusive	Victor Wilde Drive	Rhos on Sea	LL28 4LJ	24	1 bed	bungalows	Social landlord
Age Exclusive	Worsley	Colwyn Bay	LL29 8LR	6	1 bed	flats	Social landlord

Age Exclusive			
Tenure	Llandudno	Rest of Conwy	Conwy Total
Leasehold	35	73	108
Social Landlord	6	732	738
Total	41	805	846

DRAFT

Retirement Housing

Type	Name	Location	Postcode	Dwgs	Type	Accom	Tenure
Retirement Housing	Abbeyfield House	Abergele	LL22 7EW	9	1 bed	Flats	Social Landlord
Retirement Housing	Abbeyfield House	Colwyn Bay	LL29 7YB	12	1 bed	Flats & Bungalows	Social Landlord
Retirement Housing	Abbeyfield House	Rhos-on-Sea	LL28 4RY	9	1 bed	Flats	Social Landlord
Retirement Housing	Abbeyfield House	Rhos-on-Sea	LL28 4HW	5	1 bed	Flats	Social Landlord
Retirement Housing	Abbeyfield House	Llandudno	LL30 2YP	10	1 bed	Flats	Social Landlord
Retirement Housing	Abbeyfield House	Llanfairfechan	LL33 ORW	9	1 bed	Flats	Social Landlord
Retirement Housing	Argoed & Maes Gwyn	Kinmel Bay	LL18 5RN	26	1 & 2 bed	Flats & Bungalows	Social Landlord
Retirement Housing	Bryn Castell	Conwy	LL32 8LF	20	1 & 2 bed	flats	Social Landlord
Retirement Housing	Bryn Difyr	Penmaenmawr	LL34 6AH	13	1 & 2 bed	flats & Bungalows	Social landlord
Retirement Housing	Cae Mawr	Llandudno	LL30 2EW	29	1 & 2 bed	flats	Social Landlord
Retirement Housing	Cwrt Bryn Coed	Colwyn Bay	LL29 7BJ	62	1 & 2 bed	flats	Leasehold
Retirement Housing	Cwrt Gloddaeth	Llandudno	LL30 2DP	44	1 & 2 bed	flats	Leasehold
Retirement Housing	Cysgod y Gogarth	Llandudno	LL30 2TN	26	1 & 2 bed	flats	Social Landlord
Retirement Housing	Elwy Road	Colwyn Bay	LL28 4SB	26	1 bed	bungalows	Social Landlord
Retirement Housing	Ffordd Bugail	Colwyn Bay	LL29 8TN	50	1 & 2 bed	Flats & Bungalows	Social Landlord
Retirement Housing	Ffordd Dulyn	Llandudno	LL30 2RJ	37	1 & 2 bed	flats	Social Landlord
Retirement Housing	Ffordd Halfryn	Colwyn Bay	LL29 8LT	13	1 bed	bungalows	Social Landlord
Retirement Housing	Ffordd Pandy	Colwyn Bay	LL29 8DJ	31	1 bed	Flats & Bungalows	Social Landlord
Retirement Housing	Ffordd Siglen	Colwyn Bay	LL29 8HN	18	1 & 2 bed	bungalows	Social Landlord
Retirement Housing	Glanrafon	Llanrwst	LL26 0EL	16	1 & 2 bed	flats	Social Landlord
Retirement Housing	Hanover Court	Llandudno	LL30 1TP	55	1 & 2 bed	flats	Social Landlord
Retirement Housing	Hanover Court	Rhos on Sea	LL28 4HE	33	1 & 2 bed	flats	Social Landlord
Retirement Housing	Kennedy Court	Colwyn Bay	LL29 9TS	32	1 & 2 bed	flats	Social Landlord
Retirement Housing	Kings Avenue	Llandudno	LL30 2BQ	36	1 & 2 bed	flats	Social Landlord
Retirement Housing	Llys Abad	Rhos on Sea	LL28 4UN	20	1 bed	flats	Social Landlord
Retirement Housing	Llys Bodlondeb	Conwy	LL32 8DH	19	2 & 3 bed	bungalows	Social Landlord
Retirement Housing	Llys Parc	Colwyn Bay	LL28 4SD	23	1 bed	flats	Social Landlord
Retirement Housing	Llys y Coed	Old Colwyn	LL29 9UW	4	1 bed	flats	Leasehold
Retirement Housing	Maes Berllan	Llandudno	LL30 1TJ	45	2 bed	flats & bungalows	Leasehold
Retirement Housing	Maes Cwstennin	Llandudno	LL31 9AE	30	1 & 2 bed	flats	Social Landlord
Retirement Housing	Manor Park	Llandudno	LL30 2SE	84	1 & 2 bed	flats	Leasehold
Retirement Housing	Marl Crescent	Llandudno	LL31 9HP	14	2 bed	bungalows	Social Landlord
Retirement Housing	Murraydowns	Rhos on Sea	LL28 4HS	18	1 bed	flats	Social Landlord
Retirement Housing	Norman Road	Llandudno	LL30 1DU	18	1 bed	flats	Social Landlord
Retirement Housing	Norman Way	Llandudno	LL30 1DY	18	1 bed	flats	Social Landlord
Retirement Housing	Ormeside Grange	Llandudno	LL30 2DF	41	1 & 2 bed	flats	Leasehold
Retirement Housing	Parciau Close & Pentre Newydd	Colwyn Bay	LL29 9UL	44	1 & 2 bed	flats	Social Landlord
Retirement Housing	Parkway	Rhos on Sea	LL28 4SE	24	1 & 2 bed	bungalows	Social Landlord
Retirement Housing	Penrhyn Court	Llandudno	LL30 3EJ	48	1 & 2 bed	flats	Leasehold
Retirement Housing	Penrhyn Park	Rhos on Sea	LL28 4PL	38	1 & 2 bed	flats	Leasehold
Retirement Housing	Pentre Mawr	Abergele	LL22 7PL	34	1 bed	flats	Social Landlord
Retirement Housing	Princess Court	Colwyn Bay	LL29 8PJ	64	1 & 2 bed	flats	Leasehold
Retirement Housing	Princess Court	Colwyn Bay	LL29 8PJ	65	1 & 2 bed	flats	Market Rent
Retirement Housing	Rhos Manor	Rhos on Sea	LL28 4PN	50	1 & 2 bed	flats	Leasehold
Retirement Housing	Rhoslan Park	Colwyn Bay	LL29 7HR	29	1 & 2 bed	flats	Leasehold
Retirement Housing	Rhoslan Park	Colwyn Bay	LL29 7HR	29	1 & 2 bed	flats	Market Rent
Retirement Housing	Scotland Street	Llanrwst	LL26 0AL	22	1 & 2 bed	flats	Social Landlord
Retirement Housing	St Andrews Avenue	Llandudno	LL30 2YS	59	1 & 2 bed	flats and bungalows	Social Landlord
Retirement Housing	St Seriol's Gardens	Llandudno	LL30 2YU	17	1 & 2 bed	flats and bungalows	Social Landlord
Retirement Housing	St Seriol's Road	Llandudno	LL30 2YY	6	1 & 2 bed	flats	Social Landlord
Retirement Housing	Syn-Y-Mor	Colwyn Bay	LL29 7LE	56	1 & 2 bed	flats	Leasehold
Retirement Housing	Tan-y-Graig	Llanrwst	LL26 0NA	18	1 & 2 bed	flats and bungalows	Social Landlord
Retirement Housing	Taverners Court	Llandudno	LL30 2DB	31	1 & 2 bed	flats	Social Landlord
Retirement Housing	Trinity Avenue	Llandudno	LL30 2YQ	18	1 & 2 bed	flats	Social Landlord
Retirement Housing	Tudor Court	Llandudno	LL30 1BU	30	1 & 2 bed	flats	Leasehold
Retirement Housing	Twr Llewelyn	Conwy	LL32 8HY	20	1 bed	flats	Social Landlord
Retirement Housing	Ty Abbeyfield	Llanrwst	LL26 0AE	9	1 bed	flats	Social Landlord
Retirement Housing	Ty Gwynn Jones	Abergele	LL22 7HQ	32	1 & 2 bed	flats	Social Landlord
Retirement Housing	Y Berllan	Penmaenmawr	LL34 6HR	22	2 bed	flats	Social Landlord

Retirement Housing			
Tenure	Llandudno	Rest of Conwy	Conwy Total
Leasehold	292	303	595
Market Rent	-	94	94
Social Landlord	-	1,031	1,031
Total	292	1,428	1,720

DRAFT

Enhanced Sheltered and Extra Care Housing

Type	Name	Location	Postcode	Dwgs	Type	Accom	Tenure
Enhanced Sheltered	Cwrt Sant Tudno	Llandudno	LL30 1BZ	66	1 & 2 bed	Flats	Leasehold
Enhanced Sheltered	Plas Gwynfa House	Abergele	LL22 9YT	15	1 bed	Flats	Market rent
Enhanced Sheltered	Tannery Court	Abergele	LL22 7SR	50	2 & 3 bed	Flats	Leasehold
Extracare	Adlington House	Rhos-on-sea	LL28 4PU	51	1, 2, 3 bed	Flats	Leasehold
Extracare	Hafan Gwydir	Llanrwst	LL26 0AR	40	1 & 2 bed	flats	social landlord
Extracare	Hafod y Parc	Abergele	LL22 7LW	25	1 & 2 bed	Flats	social landlord
Extracare	Hafod y Parc	Abergele	LL22 7LW	24	1 & 2 bed	Flats	Leasehold
Extracare	Llys Y Coed	Llanfairfechan	LL33 0HP	46	1 & 2 bed	Flats	social landlord
Extracare	Tan y Fron	Llandudno	LL30 1NN	23	1 & 2 bed	flats	social landlord
Extracare	Tan y Fron	Llandudno	LL30 1NN	23	1 & 2 bed	flats	Leasehold

Extracare and Enhanced Sheltered Housing			
Tenure	Llandudno	Conwy	Conwy Total
Leasehold/Sh Ownership	89	125	214
Market Rent	-	15	15
Social Landlord	23	111	134
Total	112	251	363

EAC Housing Care – Accommodation Report 6th April 2021



Accommodation Report

ABBEYFIELD HOUSE

Lon Garnedd, Abergele, Conwy, LL22 7EW. [View on a map](#)

Enquiries to: Abbeyfield Wales Society Ltd

Telephone: 01745 833 668

Email: info@abbeyfieldsw.co.uk

Type(s): **RETIREMENT HOUSING**

Properties: 9 fts. Built in 1988. Sizes studio. Includes mobility standard properties.

Tenure: Tenure(s): Rent (social landlord)

Facilities: Lounge, Dining room, Laundry, Guest facilities, Garden

Web link: <https://housingcare.org/housing-care/facility-info-14605-abbeyfield-houseabergele-wales>

ABBEYFIELD HOUSE

10-12 Alexandra Road, Colwyn Bay, Conwy, LL29 7YB. [View on a map](#)

Enquiries to: Abbeyfield Colwyn Bay Society Ltd

Telephone: 01492 533 724

Email: abbey-colwyn@btconnect.com

Type(s): **RETIREMENT HOUSING**

Properties: 12 fts, bungalows. Built in 1962. Sizes studio, 1 bedroom.

Tenure: Tenure(s): Rent (social landlord)

Facilities: Lift, Stair lift(s), Dining room, Laundry, Guest facilities, Garden, Conservatory

Web link: <https://housingcare.org/housing-care/facility-info-14846-abbeyfield-housecolwyn-bay-wales>

ABBEYFIELD HOUSE

71 Rhos Road, Rhos On Sea, Colwyn Bay, Conwy, LL28 4RY. [View on a map](#)

Enquiries to: Abbeyfield Colwyn Bay Society Ltd

Telephone: 01492 533 724

Email: abbey-colwyn@btconnect.com

Type(s): **RETIREMENT HOUSING**

Properties: 9 fts. Built in 1964 and renovated in 2009. Sizes studio, 1 bedroom.

Tenure: Tenure(s): Rent (social landlord)

Facilities: Lift, Dining room, Laundry, Garden, Conservatory

Web link: <https://housingcare.org/housing-care/facility-info-14848-abbeyfield-housecolwyn-bay-wales>

ABBEYFIELD HOUSE

9 Whitehall Road, Rhos On Sea, Colwyn Bay, Clwyd, LL28 4HW. [View on a map](#)

Enquiries to: Abbeyfield Colwyn Bay Society Ltd

Telephone: 01492 533 724

Email: abbey-colwyn@btconnect.com

Type(s): **RETIREMENT HOUSING**

Properties: 5 fts. Built in 1979 and renovated in 2010. Sizes studio.

Tenure: Tenure(s): Rent (social landlord)

Facilities: Lift, Stair lift(s), Dining room, Laundry, Guest facilities, Garden, Conservatory

Web link: <https://housingcare.org/housing-care/facility-info-14850-abbeyfield-housecolwyn-bay-wales>

ABBEYFIELD HOUSE

57 Lloyd Street, Llandudno, Conwy, LL30 2YP. [View on a map](#)

Enquiries to: Abbeyfield Llandudno Society Ltd

Telephone: 01492 877 101

Email: info@abbeyfieldsw.co.uk

Type(s): **RETIREMENT HOUSING**

Properties: 10 fts. Built in 1910 and renovated in 1992. Sizes studio.

Tenure: Tenure(s): Rent (social landlord)

Facilities: Lift, Lounge, Dining room, Laundry, Guest facilities, Garden

Web link: <https://housingcare.org/housing-care/facility-info-15124-abbeyfield-houellandudno-wales>

ABBEYFIELD HOUSE

Parc Hen Blas Estate, Llanfairfechan, Gwynedd, LL33 0RW. [View on a map](#)

Enquiries to: Abbeyfield Wales Society Ltd

Telephone: 01248 681 152

Email: info@abbeyfieldsw.co.uk

Type(s): **RETIREMENT HOUSING**

Properties: 9 fts. Built in 1986 and renovated in 1995. Sizes studio.

Tenure: Tenure(s): Rent (social landlord)

Facilities: Lounge, Dining room, Laundry, Guest facilities, Garden

Web link: <https://housingcare.org/housing-care/facility-info-15128-abbeyfield-houellanfairfechan-wales>

ADLINGTON HOUSE

Abbey Road, Rhos-on-Sea, Colwyn Bay, Conwy, LL28 4PU. [View on a map](#)

Enquiries to: MHA

Telephone: 01332 296 200

Email: enquiries@mha.org.uk

Type(s): **EXTRA CARE HOUSING**

Properties: 51 fts. Built in 2009. Sizes 1 bedroom, 2 bedroom, 3 bedroom. Includes mobility and wheelchair standard properties.

Tenure: Tenure(s): Leasehold

Facilities: Lift, Lounge, Dining room, Guest facilities, Garden, Activities room, Cafe, Hairdressing salon, Library, Assisted bathing facility, exercise room (no equipment), IT suite

Web link: <https://housingcare.org/housing-care/facility-info-158068-adlington-houserhosonseawales>

ALLERTON COURT

Pentywyn Road, Deganwy, Conwy, LL31 9SA. [View on a map](#)

Enquiries to: Wales & West Housing

Telephone: 0800 052 2526

Email: contactus@wwha.co.uk

Type(s): **AGE EXCLUSIVE HOUSING**

Properties: 30 fts. Built in 1976. Sizes 1 bedroom.

Tenure: Tenure(s): Rent (social landlord)

Facilities: Garden

Web link: <https://housingcare.org/housing-care/facility-info-10956-allerton-court-deganwywales>

ARGOED & MAES GWYN

Chester Avenue Estate, Kinmel Bay, Rhyl, Conwy, LL18 5LN. [View on a map](#)

Enquiries to: Cartref Conwy

Telephone: 0300 124 0040

Email: enquiries@cartrefionwy.org

Type(s): **RETIREMENT HOUSING**

Properties: 26 flts, bungalows. Built in 1974. Sizes 1 bedroom, 2 bedroom. Includes mobility standard properties.

Tenure: Tenure(s): Rent (social landlord)

Web link: <https://housingcare.org/housing-care/facility-info-6998-argod-maes-gwynkinmel-bay-wales>

BODTEGWEL TERRACE

Bodtegwel, St George , Abergele, Conwy, LL22 9BH. [View on a map](#)

Enquiries to: Cartref Conwy

Telephone: 0300 124 0040

Email: enquiries@cartrefionwy.org

Type(s): **AGE EXCLUSIVE HOUSING**

Properties: 4 bungalows. Built in 1968. Sizes 1 bedroom. Includes mobility standard properties.

Tenure: Tenure(s): Rent (social landlord)

Web link: <https://housingcare.org/housing-care/facility-info-7005-bodtegwel-terrace-stgeorge-wales>

BRO GEIRIONYDD

Trefriw, Conwy, LL27 0JE. [View on a map](#)

Enquiries to: Cartref Conwy

Telephone: 0300 124 0040

Email: enquiries@cartrefionwy.org

Type(s): **AGE EXCLUSIVE HOUSING**

Properties: 4 bungalows. Built in 1973. Sizes 2 bedroom.

Tenure: Tenure(s): Rent (social landlord)

Web link: <https://housingcare.org/housing-care/facility-info-1389-bro-geirionydd-trefriwwales>

BRO GETHIN

Betws-y-Coed, Conwy, LL24 0BT. [View on a map](#)

Enquiries to: Cartref Conwy

Telephone: 0300 124 0040

Email: enquiries@cartrefionwy.org

Type(s): **AGE EXCLUSIVE HOUSING**

Properties: 8 flts. Built in 1973. Sizes 1 bedroom.

Tenure: Tenure(s): Rent (social landlord)

Web link: <https://housingcare.org/housing-care/facility-info-1417-bro-gethin-betwsycoedwales>

BRONALLT

Groes , Denbigh, Conwy, LL16 5RT. [View on a map](#)

Enquiries to: Cartref Conwy

Telephone: 0300 124 0040

Email: enquiries@cartrefionwy.org

Type(s): **AGE EXCLUSIVE HOUSING**

Properties: 12 bungalows. Built in 1971. Sizes 1 bedroom, 2 bedroom. Includes mobility standard properties.

Tenure: Tenure(s): Rent (social landlord)

Web link: <https://housingcare.org/housing-care/facility-info-6992-bronallt-groes-wales>

BRON-Y-WAUN

Penmachno, Betws-y-Coed, Conwy, LL24 0YN. [View on a map](#)

Enquiries to: Cartref Conwy
Telephone: 0300 124 0040
Email: enquiries@cartrefionwy.org
Type(s): **AGE EXCLUSIVE HOUSING**
Properties: 5 bungalows. Built in 1952. Sizes 2 bedroom.
Tenure: Tenure(s): Rent (social landlord)
Web link: <https://housingcare.org/housing-care/facility-info-1421-bronywaun-penmachnowales>

BRYN AWELON

Bryn Twr, Abergele, Conwy, LL22 8FA. [View on a map](#)
Enquiries to: Clwyd Alyn Housing Association Ltd
Telephone: 0800 183 5757 or 01745 536800
Email: enquiries@pennaf.co.uk
Type(s): **AGE EXCLUSIVE HOUSING**
Properties: 10 fts. Built in 1989. Sizes 2 bedroom. Includes mobility standard properties.
Tenure: Tenure(s): Leasehold (LSE)
Facilities: Garden
Web link: <https://housingcare.org/housing-care/facility-info-18412-bryn-awelon-abergelewales>

BRYN CASTELL

Conwy, Gwynedd, LL32 8LF. [View on a map](#)
Enquiries to: Cartref Conwy
Telephone: 0300 124 0040
Email: enquiries@cartrefionwy.org
Type(s): **RETIREMENT HOUSING**
Properties: 20 fts. Built in 1982 and renovated in 2015. Sizes 1 bedroom, 2 bedroom.
Includes mobility standard properties.
Tenure: Tenure(s): Rent (social landlord)
Facilities: Lift, Lounge, Dining room, Laundry
Web link: <https://housingcare.org/housing-care/facility-info-1387-bryn-castellllanfairfechan-wales>

BRYN CYNFAL

Ysbyty Ifan, Betws-y-Coed, Conwy, LL24 0NS. [View on a map](#)
Enquiries to: Cartref Conwy
Telephone: 0300 124 0040
Email: enquiries@cartrefionwy.org
Type(s): **AGE EXCLUSIVE HOUSING**
Properties: 4 bungalows. Built in 1930. Sizes 2 bedroom.
Tenure: Tenure(s): Rent (social landlord)
Web link: <https://housingcare.org/housing-care/facility-info-1395-bryn-cynfal-ysbyty-ifanwales>

BRYN DIFYR

Penmaenmawr, Conwy, LL34 6AH. [View on a map](#)
Enquiries to: Cartref Conwy
Telephone: 0300 124 0040
Email: enquiries@cartrefionwy.org
Type(s): **AGE EXCLUSIVE HOUSING / RETIREMENT HOUSING**
Properties: 26 fts, bungalows. Built in 1965. Sizes 1 bedroom, 2 bedroom. Includes mobility standard properties.
Tenure: Tenure(s): Rent (social landlord)
Web link: <https://housingcare.org/housing-care/facility-info-1415-bryn-difyrpenmaenmawr-wales>

BRYN MORFA

Dolgarrog, Conwy, Conwy, LL32 8JW. [View on a map](#)

Enquiries to: Cartref Conwy

Telephone: 0300 124 0040

Email: enquiries@cartrefionwy.org

Type(s): **AGE EXCLUSIVE HOUSING**

Properties: 6 bungalows. Built in 1956. Sizes 2 bedroom.

Tenure: Tenure(s): Rent (social landlord)

Web link: <https://housingcare.org/housing-care/facility-info-1420-bryn-morfa-dolgarrogwales>

BRYN TIRION

Dolgarrog, Conwy, Conwy, LL32 8QD. [View on a map](#)

Enquiries to: Cartref Conwy

Telephone: 0300 124 0040

Email: enquiries@cartrefionwy.org

Type(s): **AGE EXCLUSIVE HOUSING**

Properties: 3 bungalows. Built in 1942. Sizes 2 bedroom.

Tenure: Tenure(s): Rent (social landlord)

Web link: <https://housingcare.org/housing-care/facility-info-1419-bryn-tirion-dolgarrogwales>

CAE BRONYDD

Llanrwst, Conwy, LL26 0BA. [View on a map](#)

Enquiries to: Cartref Conwy

Telephone: 0300 124 0040

Email: enquiries@cartrefionwy.org

Type(s): **AGE EXCLUSIVE HOUSING**

Properties: 10 bungalows. Built in 1942. Sizes 1 bedroom. Includes mobility standard properties.

Tenure: Tenure(s): Rent (social landlord)

Web link: <https://housingcare.org/housing-care/facility-info-1412-cae-bronydd-llanrwstwales>

CAE MAWR

Alexander Road, Llandudno, Conwy, LL30 2EW. [View on a map](#)

Enquiries to: Wales & West Housing

Telephone: 0800 052 2526

Email: contactus@wwha.co.uk

Type(s): **RETIREMENT HOUSING**

Properties: 29 fts. Built in 1990. Sizes studio, 1 bedroom, 2 bedroom.

Tenure: Tenure(s): Rent (social landlord)

Facilities: Lounge, Laundry, Guest facilities, Garden

Web link: <https://housingcare.org/housing-care/facility-info-10950-cae-mawr-llandudnowales>

CWRT BRYN COED

8 Coed Pella Road, Colwyn Bay, North Wales, LL29 7BJ. [View on a map](#)

Enquiries to: FirstPort

Telephone: 0333 321 4041 (management) or 0333 321 4072 (sales)

Email: enquiries@retirementhomesearch.co.uk

Type(s): **RETIREMENT HOUSING**

Properties: 62 fts. Built in 2000. Sizes 1 bedroom, 2 bedroom.

Tenure: Tenure(s): Leasehold

Facilities: Lift, Lounge, Laundry, Guest facilities, Garden, kitchen

Web link: <https://housingcare.org/housing-care/facility-info-82982-cwrt-bryn-coed-colwynbay-wales>

CWRT CAE MOR

Towyn, Abergele, Conwy, LL22 9PD. [View on a map](#)

Enquiries to: Cartref Conwy

Telephone: 0300 124 0040

Email: enquiries@cartrefionwy.org

Type(s): **AGE EXCLUSIVE HOUSING**

Properties: 32 fts. Built in 1983. Sizes 1 bedroom, 2 bedroom. Includes mobility standard properties.

Tenure: Tenure(s): Rent (social landlord)

Web link: <https://housingcare.org/housing-care/facility-info-6999-cwrt-cae-mor-towynwales>

CWRT GLODDAETH

Gloddaeth Street, Llandudno, Gwynedd, LL30 2DP. [View on a map](#)

Enquiries to: McCarthy Stone Management Services

Telephone: 0345 556 4121

Email: resales@mccarthyandstone.co.uk

Type(s): **RETIREMENT HOUSING**

Properties: 44 fts. Built in 2013. Sizes 1 bedroom, 2 bedroom.

Tenure: Tenure(s): Leasehold

Facilities: Lift, Lounge, Laundry, Guest facilities, Garden, car parking

Web link: <https://housingcare.org/housing-care/facility-info-160047-cwrt-gloddaethllandudno-wales>

CWRT SANT TUDNO

The Promenade, Clarence Road, Llandudno, North Wales, LL30 1BZ. [View on a map](#)

Enquiries to: FirstPort

Telephone: 0333 321 4041 (management) or 0333 321 4072 (sales)

Email: enquiries@retirementhomesearch.co.uk

Type(s): **ENHANCED SHELTERED HOUSING**

Properties: 66 fts. Built in 2002. Sizes 1 bedroom, 2 bedroom. Includes mobility and wheelchair standard properties.

Tenure: Tenure(s): Leasehold

Facilities: Lift, Lounge, Dining room, Laundry, Guest facilities, Garden, Hobby room, Library

Web link: <https://housingcare.org/housing-care/facility-info-84462-cwrt-sant-tudnollandudno-wales>

CYSGOD Y GOGARTH

Trinity Avenue, Llandudno, Conwy, LL30 2TN. [View on a map](#)

Enquiries to: Cartref Conwy

Telephone: 0300 124 0040

Email: enquiries@cartrefionwy.org

Type(s): **RETIREMENT HOUSING**

Properties: 26 fts. Built in 2015. Sizes 1 bedroom, 2 bedroom. Includes mobility standard properties.

Tenure: Tenure(s): Rent (social landlord)

Facilities: Laundry, Guest facilities, Garden, Community centre, Hobby room

Web link: <https://housingcare.org/housing-care/facility-info-1409-cysgod-y-gogarthllandudno-wales>

DDOL DDU

Of Llanelian Road, Old Colwyn, Colwyn Bay, Conwy, LL29 8YH. [View on a map](#)

Enquiries to: Cartref Conwy

Telephone: 0300 124 0040

Email: enquiries@cartrefionwy.org

Type(s): **AGE EXCLUSIVE HOUSING**

Properties: 8 bungalows. Built in 1979. Sizes 1 bedroom. Includes mobility standard properties.

Tenure: Tenure(s): Rent (social landlord)

Web link: <https://housingcare.org/housing-care/facility-info-7019-ddol-ddu-old-colwynwales>

ELWY ROAD

Rhos on Sea, Colwyn Bay, Conwy, LL28 4SB. [View on a map](#)

Enquiries to: Cartref Conwy

Telephone: 0300 124 0040

Email: enquiries@cartrefionwy.org

Type(s): **RETIREMENT HOUSING**

Properties: 26 bungalows. Built in 1965. Sizes 1 bedroom. Includes mobility standard properties.

Tenure: Tenure(s): Rent (social landlord)

Web link: <https://housingcare.org/housing-care/facility-info-7028-elwy-road-rhos-on-seawales>

FFORDD BUGAIL

Fron Estate, Colwyn Bay, Conwy, LL29 8TN. [View on a map](#)

Enquiries to: Cartref Conwy

Telephone: 0300 124 0040

Email: enquiries@cartrefionwy.org

Type(s): **RETIREMENT HOUSING**

Properties: 50 fts, bungalows. Built in 1981 and renovated in 2013. Sizes 1 bedroom, 2 bedroom. Includes mobility and wheelchair standard properties.

Tenure: Tenure(s): Rent (social landlord)

Facilities: Lounge, Laundry, Community centre

Web link: <https://housingcare.org/housing-care/facility-info-7018-ffrdd-bugail-colwynbay-wales>

FFORDD DULYN

Llandudno, Conwy, LL30 2RJ. [View on a map](#)

Enquiries to: Cartref Conwy

Telephone: 0300 124 0040

Email: enquiries@cartrefionwy.org

Type(s): **RETIREMENT HOUSING**

Properties: 37 fts. Built in 1983. Sizes 1 bedroom, 2 bedroom. Includes mobility and wheelchair standard properties.

Tenure: Tenure(s): Rent (social landlord)

Web link: <https://housingcare.org/housing-care/facility-info-1403-ffrdd-dulyn-llandudnowales>

FFORDD HAFRYN

Fron Estate, Colwyn Bay, Conwy, LL29 8LT. [View on a map](#)

Enquiries to: Cartref Conwy

Telephone: 0300 124 0040

Email: enquiries@cartrefionwy.org

Type(s): **RETIREMENT HOUSING**

Properties: 13 bungalows. Built in 1975. Sizes 1 bedroom. Includes mobility standard properties.

Tenure: Tenure(s): Rent (social landlord)

Facilities: Lounge, Laundry, Community centre

Web link: <https://housingcare.org/housing-care/facility-info-7023-ffrdd-hafryn-colwynbay-wales>

FFORDD PANDY

Fron Estate, Colwyn Bay, Conwy, LL29 8DJ. [View on a map](#)

Enquiries to: Cartref Conwy

Telephone: 0300 124 0040

Email: enquiries@cartrefionwy.org

Type(s): **RETIREMENT HOUSING**

Properties: 31 fts, bungalows. Built in 1978. Sizes studio, 1 bedroom. Includes mobility standard properties.

Tenure: Tenure(s): Rent (social landlord)

Facilities: Lift, Lounge, Laundry, Community centre, Activities room

Web link: <https://housingcare.org/housing-care/facility-info-7022-ffrdd-pandy-colwynbay-wales>

FFORDD SIGLEN

Fron Estate, Colwyn Bay, Conwy, LL29 8HN. [View on a map](#)

Enquiries to: Cartref Conwy

Telephone: 0300 124 0040

Email: enquiries@cartrefionwy.org

Type(s): **RETIREMENT HOUSING**

Properties: 18 bungalows. Built in 1974. Sizes 1 bedroom, 2 bedroom. Includes mobility standard properties.

Tenure: Tenure(s): Rent (social landlord)

Facilities: Lounge, Laundry, Community centre

Web link: <https://housingcare.org/housing-care/facility-info-7017-ffrdd-siglen-colwyn-baywales>

GER-Y-MOR

Pensarn , Abergele, Conwy, LL22 7PX. [View on a map](#)

Enquiries to: Cartref Conwy

Telephone: 0300 124 0040

Email: enquiries@cartrefionwy.org

Type(s): **AGE EXCLUSIVE HOUSING**

Properties: 32 fts, bungalows. Built in 1981. Sizes 1 bedroom, 2 bedroom. Includes mobility and wheelchair standard properties.

Tenure: Tenure(s): Rent (social landlord)

Web link: <https://housingcare.org/housing-care/facility-info-7003-gerymor-pensarn-wales>

GLANRAFON

Llanrwst, Conwy, LL26 0EL. [View on a map](#)

Enquiries to: Cartref Conwy

Telephone: 0300 124 0040

Email: enquiries@cartrefionwy.org

Type(s): **RETIREMENT HOUSING**

Properties: 16 fts. Built in 1973. Sizes 1 bedroom, 2 bedroom. Includes mobility standard properties.

Tenure: Tenure(s): Rent (social landlord)

Web link: <https://housingcare.org/housing-care/facility-info-1386-glanrafon-llanrwst-wales>

GLAN-Y-FEDW

Betws-yn-Rhos, Conwy, LL22 8AP. [View on a map](#)

Enquiries to: Cartref Conwy

Telephone: 0300 124 0040

Email: enquiries@cartrefionwy.org

Type(s): AGE EXCLUSIVE HOUSING

Properties: 17 bungalows. Built in 1971. Sizes 1 bedroom, 2 bedroom. Includes mobility standard properties.

Tenure: Tenure(s): Rent (social landlord)

Web link: <https://housingcare.org/housing-care/facility-info-6997-glanyfedw-betwsynrhoswales>

GORWEL

Maes Camol Estate, Abergele, Conwy, LL22 7PB. [View on a map](#)

Enquiries to: Cartref Conwy

Telephone: 0300 124 0040

Email: enquiries@cartrefionwy.org

Type(s): AGE EXCLUSIVE HOUSING

Properties: 26 bungalows. Built in 1962. Sizes 1 bedroom. Includes mobility standard properties.

Tenure: Tenure(s): Rent (social landlord)

Web link: <https://housingcare.org/housing-care/facility-info-7004-gorwel-abergele-wales>

GROES ROAD

Colwyn Bay, Conwy, LL29 8YW. [View on a map](#)

Enquiries to: Cartref Conwy

Telephone: 0300 124 0040

Email: enquiries@cartrefionwy.org

Type(s): AGE EXCLUSIVE HOUSING

Properties: 10 bungalows. Built in 1983. Sizes 1 bedroom, 2 bedroom. Includes mobility standard properties.

Tenure: Tenure(s): Rent (social landlord)

Web link: <https://housingcare.org/housing-care/facility-info-7021-groes-road-colwyn-baywales>

GWELFRYN

Mochdre, Colwyn, Conwy, LL28 5BA. [View on a map](#)

Enquiries to: Cartref Conwy

Telephone: 0300 124 0040

Email: enquiries@cartrefionwy.org

Type(s): AGE EXCLUSIVE HOUSING

Properties: 11 bungalows. Built in 1968. Sizes 1 bedroom, 2 bedroom. Includes mobility and wheelchair standard properties.

Tenure: Tenure(s): Rent (social landlord)

Web link: <https://housingcare.org/housing-care/facility-info-7025-gwelfryn-mochdre-wales>

HAFAN GOGARTH

Abbey Road, Llandudno, Gwynedd, LL30 2ET. [View on a map](#)

Enquiries to: Domus Cambria

Telephone: 01492 572727

Email: customerservices@nwaha.org.uk

Type(s): AGE EXCLUSIVE HOUSING

Properties: 35 fts. Built in 2013. Sizes 2 bedroom.

Tenure: Tenure(s): Leasehold

Facilities: Lift, Garden

Web link: <https://housingcare.org/housing-care/facility-info-160406-hafan-gogarthllandudno-junction-wales>

HAFAN GWYDIR

School Bank Road, Llanwrst, Conwy, LL26 0AR. [View on a map](#)

Enquiries to: Clwyd Alyn Housing Association Ltd

Telephone: 0800 183 5757 or 01745 536800

Email: enquiries@pennaf.co.uk

Type(s): **EXTRA CARE HOUSING**

Properties: 40 fts. Built in 2009. Sizes 1 bedroom, 2 bedroom.

Tenure: Tenure(s): Rent (social landlord)

Facilities: Lounge, Dining room, Restaurant open to the public, Laundry, Guest facilities, Garden, Hobby room, Hairdressing salon, Library

Web link: <https://housingcare.org/housing-care/facility-info-116574-hafan-gwydir-oldschool-bank-road-wales>

HAFOD Y PARC

Kinmel Avenue, Abergele, Conwy, LL22 7LW. [View on a map](#)

Enquiries to: North Wales Housing Association

Telephone: 01492 572 727

Email: customerservices@nwaha.org.uk

Type(s): **EXTRA CARE HOUSING**

Properties: 49 fts. Built in 2014. Sizes 1 bedroom, 2 bedroom.

Tenure: Tenure(s): Rent (social landlord) and Leasehold

Facilities: Lift, Lounge, Restaurant open to the public, Laundry, Guest facilities, Garden, Hobby room, Hairdressing salon, Assisted bathing facility

Web link: <https://housingcare.org/housing-care/facility-info-159631-hafod-y-parc-abergelewales>

HANOVER COURT

Mostyn Broadway, Llandudno, Conwy, LL30 1TP. [View on a map](#)

Enquiries to: Wales & West Housing

Telephone: 0800 052 2526

Email: contactus@wwha.co.uk

Type(s): **RETIREMENT HOUSING**

Properties: 55 fts. Built in 1972. Sizes 1 bedroom, 2 bedroom.

Tenure: Tenure(s): Rent (social landlord)

Facilities: Lift, Guest facilities, Garden

Web link: <https://housingcare.org/housing-care/facility-info-10954-hanover-courtllandudno-wales>

HANOVER COURT

Rhos Road, Rhos on Sea, Conwy, LL28 4HE. [View on a map](#)

Enquiries to: Wales & West Housing

Telephone: 0800 052 2526

Email: contactus@wwha.co.uk

Type(s): **RETIREMENT HOUSING**

Properties: 33 fts. Built in 1983. Sizes 1 bedroom, 2 bedroom. Includes wheelchair standard properties.

Tenure: Tenure(s): Rent (social landlord)

Facilities: Laundry, Guest facilities, Garden

Web link: <https://housingcare.org/housing-care/facility-info-10955-hanover-court-rhos-onsea-wales>

HEATHER CLOSE

Old Colwyn, Colwyn Bay, Conwy, LL29 9DW. [View on a map](#)

Enquiries to: Cartref Conwy

Telephone: 0300 124 0040

Email: enquiries@cartrefionwy.org

Type(s): AGE EXCLUSIVE HOUSING

Properties: 8 bungalows. Built in 1977. Sizes 1 bedroom. Includes mobility standard properties.

Tenure: Tenure(s): Rent (social landlord)

Web link: <https://housingcare.org/housing-care/facility-info-7011-heather-close-oldcolwyn-wales>

KENNEDY COURT

Old Colwyn, Colwyn Bay, Conwy, LL29 9TS. [View on a map](#)

Enquiries to: Cartref Conwy

Telephone: 0300 124 0040

Email: enquiries@cartrefionwy.org

Type(s): RETIREMENT HOUSING

Properties: 32 fts. Built in 1966. Sizes 1 bedroom, 2 bedroom. Includes mobility standard properties.

Tenure: Tenure(s): Rent (social landlord)

Facilities: Laundry, Community centre

Web link: <https://housingcare.org/housing-care/facility-info-7016-kennedy-court-oldcolwyn-wales>

KINGS AVENUE

Llandudno, Conwy, LL30 2BQ. [View on a map](#)

Enquiries to: Cartref Conwy

Telephone: 0300 124 0040

Email: enquiries@cartrefionwy.org

Type(s): RETIREMENT HOUSING

Properties: 36 fts. Built in 1979. Sizes 1 bedroom, 2 bedroom. Includes mobility standard properties.

Tenure: Tenure(s): Rent (social landlord)

Web link: <https://housingcare.org/housing-care/facility-info-1405-kings-avenue-llandudnowales>

KYFFIN CLOSE

Old Colwyn, Colwyn Bay, Conwy, LL29 9TN. [View on a map](#)

Enquiries to: Cartref Conwy

Telephone: 0300 124 0040

Email: enquiries@cartrefionwy.org

Type(s): AGE EXCLUSIVE HOUSING

Properties: 16 fts. Built in 1966. Sizes 1 bedroom. Includes mobility standard properties.

Tenure: Tenure(s): Rent (social landlord)

Web link: <https://housingcare.org/housing-care/facility-info-7015-kyfficlose-old-colwynwales>

LLAIN DERI

Pwllcrochen Avenue, Colwyn Bay, Conwy, LL29 7BU. [View on a map](#)

Enquiries to: North Wales Housing Association

Telephone: 01492 572 727

Email: customerservices@nwaha.org.uk

Type(s): AGE EXCLUSIVE HOUSING

Properties: 18 fts. Built in 1989. Sizes 1 bedroom. Includes mobility standard properties.

Tenure: Tenure(s): Rent (social landlord)

Facilities: Lift, Lounge, Garden

Web link: <https://housingcare.org/housing-care/facility-info-9377-llain-deri-colwyn-baywales>

LLWYN-Y-GOG

Llanfairfechan, Conwy, LL33 0UU. [View on a map](#)

Enquiries to: Cartref Conwy

Telephone: 0300 124 0040

Email: enquiries@cartrefionwy.org

Type(s): **AGE EXCLUSIVE HOUSING**

Properties: 10 bungalows. Built in 1970. Sizes 2 bedroom. Includes mobility standard properties.

Tenure: Tenure(s): Rent (social landlord)

Web link: <https://housingcare.org/housing-care/facility-info-1397-llwynyogllanfairfechan-wales>

LLYS ABAD

Abbey Road, Rhos On Sea, Colwyn Bay, Clwyd, LL28 4UN. [View on a map](#)

Enquiries to: Clwyd Alyn Housing Association Ltd

Telephone: 0800 183 5757 or 01745 536800

Email: enquiries@pennaf.co.uk

Type(s): **RETIREMENT HOUSING**

Properties: 20 fts. Sizes 1 bedroom. Includes mobility standard properties.

Tenure: Tenure(s): Rent (social landlord)

Facilities: Lift, Garden

Web link: <https://housingcare.org/housing-care/facility-info-85907-llys-abad-rhosonseawales>

LLYS ARFON

Abergele Road, Old Colwyn, Colwyn Bay, Clwyd, LL29 8AS. [View on a map](#)

Enquiries to: North Wales Housing Association

Telephone: 01492 572 727

Email: customerservices@nwha.org.uk

Type(s): **AGE EXCLUSIVE HOUSING**

Properties: 12 fts. Built in 1988. Sizes 1 bedroom, 2 bedroom. Includes mobility standard properties.

Tenure: Tenure(s): Rent (social landlord)

Web link: <https://housingcare.org/housing-care/facility-info-9376-llys-arfon-old-colwynwales>

LLYS BODLONDEB

Conwy, Gwynedd, LL32 8DH. [View on a map](#)

Enquiries to: Cartref Conwy

Telephone: 0300 124 0040

Email: enquiries@cartrefionwy.org

Type(s): **RETIREMENT HOUSING**

Properties: 19 bungalows, cottages. Built in 1994. Sizes 2 bedroom, 3 bedroom.

Tenure: Tenure(s): Rent (social landlord)

Web link: <https://housingcare.org/housing-care/facility-info-162815-llys-bodlondeb-conwywales>

LLYS CARADOC

Towyn, Abergele, Conwy, LL22 9PG. [View on a map](#)

Enquiries to: Cartref Conwy

Telephone: 0300 124 0040

Email: enquiries@cartrefionwy.org

Type(s): **AGE EXCLUSIVE HOUSING**

Properties: 3 bungalows. Built in 1977. Sizes 1 bedroom.

Tenure: Tenure(s): Rent (social landlord)

Web link: <https://housingcare.org/housing-care/facility-info-7001-llys-caradoc-towyn-wales>

LLYS CLWYD

Bangor Road, Penmaenmawr, Conwy, LL34 6AF. [View on a map](#)

Enquiries to: Clwyd Alyn Housing Association Ltd

Telephone: 0800 183 5757 or 01745 536800

Email: enquiries@pennaf.co.uk

Type(s): AGE EXCLUSIVE HOUSING

Properties: 12 fts. Sizes 1 bedroom.

Tenure: Tenure(s): Rent (social landlord)

Facilities: Garden

Web link: <https://housingcare.org/housing-care/facility-info-85916-llys-clwydpenmaenmawr-wales>

LLYS EDNYFED

Conwy Road, Mochdre, Conwy, LL28 5EG. [View on a map](#)

Enquiries to: Clwyd Alyn Housing Association Ltd

Telephone: 0800 183 5757 or 01745 536800

Email: enquiries@pennaf.co.uk

Type(s): AGE EXCLUSIVE HOUSING

Properties: 20 fts. Sizes 1 bedroom, 2 bedroom. Includes mobility standard properties.

Tenure: Tenure(s): Flexi-tenure

Facilities: Garden

Web link: <https://housingcare.org/housing-care/facility-info-19082-llys-ednyfed-mochdre-wales>

LLYS GELE

Abergele, Conwy, LL22 7LF. [View on a map](#)

Enquiries to: Cartref Conwy

Telephone: 0300 124 0040

Email: enquiries@cartrefionwy.org

Type(s): AGE EXCLUSIVE HOUSING

Properties: 12 fts. Built in 1986. Sizes 1 bedroom. Includes mobility standard properties.

Tenure: Tenure(s): Rent (social landlord)

Web link: <https://housingcare.org/housing-care/facility-info-7002-llys-gele-abergele-wales>

LLYS HAFAN

20 Everard Road, Rhos-on-Sea, Conwy, LL28 4EY. [View on a map](#)

Enquiries to: Clwyd Alyn Housing Association Ltd

Telephone: 0800 183 5757 or 01745 536800

Email: enquiries@pennaf.co.uk

Type(s): AGE EXCLUSIVE HOUSING

Properties: 14 fts. Built in 1986. Sizes 1 bedroom, 2 bedroom. Includes mobility standard properties.

Tenure: Tenure(s): Leasehold (LSE)

Facilities: Lift, Garden

Web link: <https://housingcare.org/housing-care/facility-info-17405-llys-hafan-rhosonseawales>

LLYS JANET

Of Greenhill, Old Colwyn, Colwyn Bay, Conwy, LL29 9RR. [View on a map](#)

Enquiries to: Cartref Conwy

Telephone: 0300 124 0040

Email: enquiries@cartrefionwy.org

Type(s): AGE EXCLUSIVE HOUSING

Properties: 10 fts. Built in 1985. Sizes 1 bedroom.

Tenure: Tenure(s): Rent (social landlord)

Web link: <https://housingcare.org/housing-care/facility-info-7009-llys-janet-old-colwynwales>

LLYS MADOC

Abergele Road, Old Colwyn, Colwyn Bay, Conwy, LL29 9LU. [View on a map](#)

Enquiries to: Cartref Conwy

Telephone: 0300 124 0040

Email: enquiries@cartrefionwy.org

Type(s): **AGE EXCLUSIVE HOUSING**

Properties: 20 fts. Built in 1980. Sizes 1 bedroom, 2 bedroom. Includes mobility standard properties.

Tenure: Tenure(s): Rent (social landlord)

Web link: <https://housingcare.org/housing-care/facility-info-7008-llys-madoc-old-colwynwales>

LLYS PARC

Rhos on Sea, Colwyn Bay, Conwy, LL28 4SD. [View on a map](#)

Enquiries to: Cartref Conwy

Telephone: 0300 124 0040

Email: enquiries@cartrefionwy.org

Type(s): **RETIREMENT HOUSING**

Properties: 23 fts. Built in 1979. Sizes studio, 1 bedroom. Includes mobility standard properties.

Tenure: Tenure(s): Rent (social landlord)

Facilities: Lounge, Laundry, Community centre

Web link: <https://housingcare.org/housing-care/facility-info-7026-llys-parc-rhos-on-seawales>

LLYS WYN & ST MONICAS

Wyn Avenue North, Old Colwyn, Colwyn Bay, Conwy, LL29 9RW. [View on a map](#)

Enquiries to: North Wales Housing Association

Telephone: 01492 572 727

Email: customerservices@nwaha.org.uk

Type(s): **AGE EXCLUSIVE HOUSING**

Properties: 8 fts. Built in 1988. Sizes 1 bedroom. Includes mobility standard properties.

Tenure: Tenure(s): Rent (social landlord)

Web link: <https://housingcare.org/housing-care/facility-info-9374-llys-wyn-st-monicas-oldcolwyn-wales>

LLYS Y COED

Cae Ffynon Road, Llanfairfechan, Conwy, LL33 0HP. [View on a map](#)

Enquiries to: North Wales Housing Association

Telephone: 01492 572 727

Email: customerservices@nwaha.org.uk

Type(s): **EXTRA CARE HOUSING**

Properties: 46 fts. Built in 2009. Sizes 1 bedroom, 2 bedroom.

Tenure: Tenure(s): Rent (social landlord)

Facilities: Lift, Lounge, Dining room, Laundry, Guest facilities, Garden, Hobby room, Activities room, Shop, Hairdressing salon, Library, Assisted bathing facility, IT room

Web link: <https://housingcare.org/housing-care/facility-info-158121-llys-y-coedllanfairfechan-wales>

LLYS Y COED

Coeh Coch Road, Old Colwyn, Conwy, LL29 9UW. [View on a map](#)

Enquiries to: Clwyd Alyn Housing Association Ltd

Telephone: 0800 183 5757 or 01745 536800

Email: enquiries@pennaf.co.uk

Type(s): **RETIREMENT HOUSING**

Properties: 4 flts. Built in 1985. Sizes 1 bedroom.

Tenure: Tenure(s): Leasehold (LSE)

Web link: <https://housingcare.org/housing-care/facility-info-17404-llys-y-coed-old-colwynwales>

LON CYMRU

Llandudno, Conwy, LL30 1SJ. [View on a map](#)

Enquiries to: Cartref Conwy

Telephone: 0300 124 0040

Email: enquiries@cartrefionwy.org

Type(s): **AGE EXCLUSIVE HOUSING**

Properties: 6 bungalows. Built in 1969. Sizes 1 bedroom.

Tenure: Tenure(s): Rent (social landlord)

Web link: <https://housingcare.org/housing-care/facility-info-1393-lon-cymru-llandudnowales>

MAES ALED & MAES Y FYNNON

Cerrig-y-Drudion, Conwy, LL21 9UE. [View on a map](#)

Enquiries to: Cartref Conwy

Telephone: 0300 124 0040

Email: enquiries@cartrefionwy.org

Type(s): **AGE EXCLUSIVE HOUSING**

Properties: 34 bungalows. Built in 1984. Sizes 1 bedroom, 2 bedroom. Includes mobility standard properties.

Tenure: Tenure(s): Rent (social landlord)

Web link: <https://housingcare.org/housing-care/facility-info-6990-maes-aled-maes-yfynnon-cerrigydrudion-wales>

MAES ALED, CREINIOG & FFORDD COGOR

Llansannan, Denbigh, Conwy, LL16 5HT. [View on a map](#)

Enquiries to: Cartref Conwy

Telephone: 0300 124 0040

Email: enquiries@cartrefionwy.org

Type(s): **AGE EXCLUSIVE HOUSING**

Properties: 22 bungalows. Built in 1984. Sizes 1 bedroom, 2 bedroom. Includes mobility standard properties.

Tenure: Tenure(s): Rent (social landlord)

Web link: <https://housingcare.org/housing-care/facility-info-6991-maes-aled-creiniogffrdd-cogor-llansannan-wales>

MAES BERLLAN

46 Queens Road, Craig y Don, Llandudno, Conwy, LL30 1TJ. [View on a map](#)

Enquiries to: Commerson Estate Management Ltd

Telephone: 0330 111 2610

Email: info@commerson-em.com

Type(s): **RETIREMENT HOUSING**

Properties: 43 bungalows. Built in 1988. Sizes 2 bedroom.

Tenure: Tenure(s): Leasehold

Facilities: Lounge, Laundry, Garden, kitchen, and parking facilities

Web link: <https://housingcare.org/housing-care/facility-info-163169-maes-berllanllandudno-wales>

MAES CWSTENNIN

Llandudno Junction, Conwy, LL31 9AE. [View on a map](#)

Enquiries to: Cartref Conwy

Telephone: 0300 124 0040

Email: enquiries@cartrefionwy.org

Type(s): **RETIREMENT HOUSING**

Properties: 30 fts. Built in 1996. Sizes 1 bedroom, 2 bedroom. Includes mobility standard properties.

Tenure: Tenure(s): Rent (social landlord)

Facilities: Lift, Lounge, Laundry, Guest facilities, Garden

Web link: <https://housingcare.org/housing-care/facility-info-1399-maes-cwstenninllandudno-junction-wales>

MAES CYNBRYD

Llanddulas, Abergele, Conwy, LL22 8HF. [View on a map](#)

Enquiries to: Cartref Conwy

Telephone: 0300 124 0040

Email: enquiries@cartrefionwy.org

Type(s): **AGE EXCLUSIVE HOUSING**

Properties: 9 fts, bungalows. Built in 1970. Sizes 1 bedroom. Includes mobility standard properties.

Tenure: Tenure(s): Rent (social landlord)

Web link: <https://housingcare.org/housing-care/facility-info-7007-maes-cynbrydllanddulas-wales>

MAES HYFRYD

Glan Conwy, Conwy, LL28 5NE. [View on a map](#)

Enquiries to: Cartref Conwy

Telephone: 0300 124 0040

Email: enquiries@cartrefionwy.org

Type(s): **AGE EXCLUSIVE HOUSING**

Properties: 5 bungalows. Built in 1950. Sizes 1 bedroom.

Tenure: Tenure(s): Rent (social landlord)

Web link: <https://housingcare.org/housing-care/facility-info-1418-maes-hyfryd-glan-conwywales>

MAES LLAN

Eglwysbach, Colwyn Bay, Conwy, LL28 5UB. [View on a map](#)

Enquiries to: Cartref Conwy

Telephone: 0300 124 0040

Email: enquiries@cartrefionwy.org

Type(s): **AGE EXCLUSIVE HOUSING**

Properties: 7 bungalows. Built in 1930. Sizes 2 bedroom.

Tenure: Tenure(s): Rent (social landlord)

Web link: <https://housingcare.org/housing-care/facility-info-1400-maes-llan-eglwysbachwales>

MAES LLYDAN

Capel Garmon, Llanrwst, Conwy, LL26 0RN. [View on a map](#)

Enquiries to: Cartref Conwy

Telephone: 0300 124 0040

Email: enquiries@cartrefionwy.org

Type(s): **AGE EXCLUSIVE HOUSING**

Properties: 6 bungalows. Built in 1950. Sizes 2 bedroom.

Tenure: Tenure(s): Rent (social landlord)

Web link: <https://housingcare.org/housing-care/facility-info-1390-maes-llydan-capelgarmon-wales>

MAES REFAIL

Henryd, Conwy, LL32 8YH. [View on a map](#)

Enquiries to: Cartref Conwy

Telephone: 0300 124 0040

Email: enquiries@cartrefionwy.org

Type(s): **AGE EXCLUSIVE HOUSING**

Properties: 6 bungalows. Built in 1976. Sizes 2 bedroom. Includes wheelchair standard properties.

Tenure: Tenure(s): Rent (social landlord)

Web link: <https://housingcare.org/housing-care/facility-info-1398-maes-refail-henryd-wales>

MAES-Y-BERLLAN

Melin-y-Coed, Llanrwst, Conwy, LL26 0SG. [View on a map](#)

Enquiries to: Cartref Conwy

Telephone: 0300 124 0040

Email: enquiries@cartrefionwy.org

Type(s): **AGE EXCLUSIVE HOUSING**

Properties: 3 bungalows. Built in 1970. Sizes 2 bedroom.

Tenure: Tenure(s): Rent (social landlord)

Web link: <https://housingcare.org/housing-care/facility-info-1396-maesyberllanmelinycoed-wales>

MAES-Y-FOEL

Rhyd-y-Foel, Abergele, Conwy, LL22 8ED. [View on a map](#)

Enquiries to: Cartref Conwy

Telephone: 0300 124 0040

Email: enquiries@cartrefionwy.org

Type(s): **AGE EXCLUSIVE HOUSING**

Properties: 5 bungalows. Built in 1968. Sizes 1 bedroom, 2 bedroom. Includes mobility standard properties.

Tenure: Tenure(s): Rent (social landlord)

Web link: <https://housingcare.org/housing-care/facility-info-7006-maesyfoel-rhydyfoelwales>

MAES-Y-GLYN

Glyn Estate, Colwyn Bay, Conwy, LL29 8RE. [View on a map](#)

Enquiries to: Cartref Conwy

Telephone: 0300 124 0040

Email: enquiries@cartrefionwy.org

Type(s): **AGE EXCLUSIVE HOUSING**

Properties: 6 bungalows. Built in 1954. Sizes 1 bedroom. Includes mobility standard properties.

Tenure: Tenure(s): Rent (social landlord)

Web link: <https://housingcare.org/housing-care/facility-info-7020-maesyglyn-colwyn-baywales>

MANOR PARK

Gloddaeth Avenue, Llandudno, Gwynedd, LL30 2SE. [View on a map](#)

Enquiries to: Emeritus Homes Ltd

Telephone: 01492 874 757

Email: help@emeritushomes.co.uk

Type(s): **RETIREMENT HOUSING**

Properties: 84 flts. Built in 1987. Sizes 1 bedroom, 2 bedroom.

Tenure: Tenure(s): Leasehold

Facilities: Lounge, Laundry, Guest facilities

Web link: <https://housingcare.org/housing-care/facility-info-15792-manor-park-llandudnowales>

MARL CRESCENT

Llandudno Junction, Conwy, LL31 9HP. [View on a map](#)

Enquiries to: Cartref Conwy

Telephone: 0300 124 0040

Email: enquiries@cartrefionwy.org

Type(s): **RETIREMENT HOUSING**

Properties: 14 bungalows. Built in 1921. Sizes 2 bedroom. Includes mobility standard properties.

Tenure: Tenure(s): Rent (social landlord)

Web link: <https://housingcare.org/housing-care/facility-info-1392-marl-crescent-llandudnojunction-wales>

METROPOLE

Penrhyn Road, Colwyn Bay, Conwy, LL29 8AR. [View on a map](#)

Enquiries to: North Wales Housing Association

Telephone: 01492 572 727

Email: customerservices@nwha.org.uk

Type(s): **AGE EXCLUSIVE HOUSING**

Properties: 36 flts. Built in 1891 and renovated in 1991. Sizes 1 bedroom, 2 bedroom. Includes mobility and wheelchair standard properties.

Tenure: Tenure(s): Rent (social landlord)

Facilities: Lift, Laundry, Guest facilities

Web link: <https://housingcare.org/housing-care/facility-info-85783-metropole-centralcolwyn-bay-wales>

MINAFON FLATS

Llanelian Road, Old Colwyn, Colwyn Bay, Conwy, LL29 9UF. [View on a map](#)

Enquiries to: Cartref Conwy

Telephone: 0300 124 0040

Email: enquiries@cartrefionwy.org

Type(s): **AGE EXCLUSIVE HOUSING**

Properties: 34 flts. Built in 1966. Sizes 1 bedroom. Includes mobility standard properties.

Tenure: Tenure(s): Rent (social landlord)

Web link: <https://housingcare.org/housing-care/facility-info-7014-minafon-flts-oldcolwyn-wales>

MONA ROAD

Morfa , Conwy, Conwy, LL32 8HF. [View on a map](#)

Enquiries to: Cartref Conwy

Telephone: 0300 124 0040

Email: enquiries@cartrefionwy.org

Type(s): **AGE EXCLUSIVE HOUSING**

Properties: 6 bungalows. Built in 1927. Sizes 2 bedroom. Includes mobility standard properties.

Tenure: Tenure(s): Rent (social landlord)

Web link: <https://housingcare.org/housing-care/facility-info-1391-mona-road-morfa-wales>

MORFA GARDENS / GERDDI MORFA

Morfa, Conwy, LL32 8QL. [View on a map](#)
Enquiries to: North Wales Housing Association
Telephone: 01492 572 727

Email: customerservices@nwha.org.uk

Type(s): **AGE EXCLUSIVE HOUSING**

Properties: 24 fts. Built in 1990. Sizes 1 bedroom, 2 bedroom. Includes mobility and wheelchair standard properties.

Tenure: Tenure(s): Rent (social landlord)

Web link: <https://housingcare.org/housing-care/facility-info-9370-morfa-gardens-gerddimorfa-conwy-wales>

MURRAYDOWNS

Marine Drive, Rhos-on-Sea, Colwyn Bay, Conwy, LL28 4HS. [View on a map](#)

Enquiries to: Clwyd Alyn Housing Association Ltd

Telephone: 0800 183 5757 or 01745 536800

Email: enquiries@pennaf.co.uk

Type(s): **RETIREMENT HOUSING**

Properties: 18 fts. Sizes studio, 1 bedroom.

Tenure: Tenure(s): Rent (social landlord)

Facilities: Lift, Garden

Web link: <https://housingcare.org/housing-care/facility-info-85906-murraydownsrhosonsea-wales>

NORMAN ROAD

Llandudno, Conwy, LL30 1DU. [View on a map](#)

Enquiries to: Cartref Conwy

Telephone: 0300 124 0040

Email: enquiries@cartrefionwy.org

Type(s): **RETIREMENT HOUSING**

Properties: 18 fts. Built in 1984. Sizes 1 bedroom. Includes mobility standard properties.

Tenure: Tenure(s): Rent (social landlord)

Web link: <https://housingcare.org/housing-care/facility-info-1402-norman-road-llandudnowales>

NORMAN WAY

Llandudno, Conwy, LL30 1DY. [View on a map](#)

Enquiries to: Cartref Conwy

Telephone: 0300 124 0040

Email: enquiries@cartrefionwy.org

Type(s): **RETIREMENT HOUSING**

Properties: 18 fts. Built in 1984. Sizes 1 bedroom.

Tenure: Tenure(s): Rent (social landlord)

Web link: <https://housingcare.org/housing-care/facility-info-1404-norman-way-llandudnowales>

ORMESIDE GRANGE

Gloddaeth Street, Llandudno, Conwy, LL30 2DF. [View on a map](#)

Enquiries to: Commerson Estate Management Ltd

Telephone: 0330 111 2610

Email: info@commerson-em.com

Type(s): **RETIREMENT HOUSING**

Properties: 41 fts. Built in 1990. Sizes 1 bedroom, 2 bedroom.

Tenure: Tenure(s): Leasehold

Facilities: Lift, Lounge, Laundry, Guest facilities, Garden, Conservatory, kitchen

Web link: <https://housingcare.org/housing-care/facility-info-18236-ormeside-grangellandudno-wales>

PARCIAU CLOSE & PENTRE NEWYDD

Llanelian Road, Old Colwyn, Colwyn Bay, Conwy, LL29 9UL. [View on a map](#)

Enquiries to: Cartref Conwy

Telephone: 0300 124 0040

Email: enquiries@cartrefionwy.org

Type(s): **RETIREMENT HOUSING**

Properties: 44 flts. Built in 1966. Sizes 1 bedroom, 2 bedroom. Includes mobility standard properties.

Tenure: Tenure(s): Rent (social landlord)

Facilities: Laundry, Community centre

Web link: <https://housingcare.org/housing-care/facility-info-7013-parciau-close-pentrenewydd-old-colwyn-wales>

PARKWAY

Rhos on Sea, Colwyn Bay, Conwy, LL28 4SE. [View on a map](#)

Enquiries to: Cartref Conwy

Telephone: 0300 124 0040

Email: enquiries@cartrefionwy.org

Type(s): **RETIREMENT HOUSING**

Properties: 24 bungalows. Built in 1973. Sizes 1 bedroom, 2 bedroom. Includes mobility and wheelchair standard properties.

Tenure: Tenure(s): Rent (social landlord)

Facilities: Laundry, Garden, Community centre

Web link: <https://housingcare.org/housing-care/facility-info-7027-parkway-rhos-on-seawales>

PENRHYN COURT

Maes-y-Wylan, Penrhyn Bay, Llandudno, Gwynedd, LL30 3EJ. [View on a map](#)

Enquiries to: Goldsborough Estates Ltd

Telephone: Freephone 0800 731 6287

Email: goldsboroughestates@housing21.org.uk

Type(s): **RETIREMENT HOUSING**

Properties: 48 flts. Built in 1991. Sizes 1 bedroom, 2 bedroom.

Tenure: Tenure(s): Leasehold

Facilities: Lift, Lounge, Laundry, Guest facilities, Garden, Conservatory, Library

Web link: <https://housingcare.org/housing-care/facility-info-15858-penrhyn-courtllandudno-wales>

PENRHYN PARK

Penrhyn Avenue, Rhos-on-Sea, Clwyd, LL28 4PL. [View on a map](#)

Enquiries to: Emeritus Homes Ltd

Telephone: 01492 545 201

Email: help@emeritushomes.co.uk

Type(s): **RETIREMENT HOUSING**

Properties: 38 flts. Built in 1988. Sizes 1 bedroom, 2 bedroom.

Tenure: Tenure(s): Leasehold

Facilities: Lounge, Laundry, Guest facilities

Web link: <https://housingcare.org/housing-care/facility-info-16347-penrhyn-parkrhosonsea-wales>

PENTRE MAWR

Dundonald Avenue, Abergele, Conwy, LL22 7PL. [View on a map](#)

Enquiries to: Clwyd Alyn Housing Association Ltd

Telephone: 0800 183 5757 or 01745 536800

Email: enquiries@pennaf.co.uk

Type(s): **RETIREMENT HOUSING**

Properties: 34 fts. Sizes 1 bedroom. Includes mobility standard properties.

Tenure: Tenure(s): Rent (social landlord)

Facilities: Lift, Lounge, Garden

Web link: <https://housingcare.org/housing-care/facility-info-85908-pentre-mawr-abergelewales>

PEN-Y-DORLAN

Trevor Road, Colwyn Bay, Conwy, LL29 8FQ. [View on a map](#)

Enquiries to: North Wales Housing Association

Telephone: 01492 572 727

Email: customerservices@nwaha.org.uk

Type(s): **AGE EXCLUSIVE HOUSING**

Properties: 8 fts. Built in 1991. Sizes 1 bedroom, 2 bedroom. Includes mobility standard properties.

Tenure: Tenure(s): Rent (social landlord)

Web link: <https://housingcare.org/housing-care/facility-info-9378-penydorlan-colwyn-baywales>

PLAS FORYD

Foryd Old Road, Kinmel Bay, Rhyl, Denbighshire, LL18 5BQ. [View on a map](#)

Enquiries to: Wales & West Housing

Telephone: 0800 052 2526

Email: contactus@wwha.co.uk

Type(s): **AGE EXCLUSIVE HOUSING**

Properties: 25 fts. Built in 1979. Sizes 1 bedroom, 2 bedroom. Includes mobility standard properties.

Tenure: Tenure(s): Rent (social landlord)

Web link: <https://housingcare.org/housing-care/facility-info-9373-plas-foryd-kinmel-baywales>

PLAS GWYNFA HOUSE

Plastirion Park, Towyn, Abergele, Clwyd, LL22 9YT. [View on a map](#)

Enquiries to: Plas Gwynfa House

Telephone: 01745 343747

Email: info@plasgwynfa.co.uk

Type(s): **ENHANCED SHELTERED HOUSING**

Properties: 15 fts. Renovated in 2016. Sizes studio, 1 bedroom.

Tenure: Tenure(s): Rent (market)

Facilities: Lift, Lounge, Dining room, Laundry, Garden, Hobby room, Hairdressing salon, parking facilities, terrace

Web link: <https://housingcare.org/housing-care/facility-info-161679-plas-gwynfa-houseabergelewales>

PLAS HEULOG

Albert Road, Old Colwyn, Conwy, LL29 9TH. [View on a map](#)

Enquiries to: Clwyd Alyn Housing Association Ltd

Telephone: 0800 183 5757 or 01745 536800

Email: enquiries@pennaf.co.uk

Type(s): **AGE EXCLUSIVE HOUSING**

Properties: 8 flts. Built in 1989. Sizes 2 bedroom. Includes mobility standard properties.
Tenure: Tenure(s): Leasehold (LSE)
Facilities: Garden
Web link: <https://housingcare.org/housing-care/facility-info-18411-plas-heulog-old-colwynwales>

PLAS MARIANDIR

Deganwy Road, Llanrhos, Llandudno, Gwynedd, LL30 1NB. [View on a map](#)
Enquiries to: Plas Mariandir Residents Estate Company Ltd
Telephone: 01492 581615
Type(s): **AGE EXCLUSIVE HOUSING**
Properties: 31 flts. Renovated in 1986. Sizes 1 bedroom, 2 bedroom.
Tenure: Tenure(s): Leasehold
Facilities: Stair lift(s), Lounge, Laundry, Garden, Conservatory, Library, BBQ
Web link: <https://housingcare.org/housing-care/facility-info-36046-plas-mariandir-llanrhoswales>

PLAS WYLFA

Princess Road, Old Colwyn, Colwyn Bay, Conwy, LL29 9PS. [View on a map](#)
Enquiries to: Cartref Conwy
Telephone: 0300 124 0040
Email: enquiries@cartrefionwy.org
Type(s): **AGE EXCLUSIVE HOUSING**
Properties: 14 flts. Built in 1977. Sizes 1 bedroom, 2 bedroom. Includes mobility standard properties.
Tenure: Tenure(s): Rent (social landlord)
Web link: <https://housingcare.org/housing-care/facility-info-7012-plas-wylfa-old-colwynwales>

PLAS WYN

Abergele Road, Old Colwyn, Colwyn Bay, Conwy, LL29 9PR. [View on a map](#)
Enquiries to: North Wales Housing Association
Telephone: 01492 572 727
Email: customerservices@nwaha.org.uk
Type(s): **AGE EXCLUSIVE HOUSING**
Properties: 11 flts. Built in 1983. Sizes 1 bedroom. Includes mobility standard properties.
Tenure: Tenure(s): Rent (social landlord)
Web link: <https://housingcare.org/housing-care/facility-info-9375-plas-wyn-old-colwynwales>

PLAS-Y-BERTH

Penmaenmawr Road, Llanfairfechan, Conwy, LL33 0NU. [View on a map](#)
Enquiries to: North Wales Housing Association
Telephone: 01492 572 727
Email: customerservices@nwaha.org.uk
Type(s): **AGE EXCLUSIVE HOUSING**
Properties: 22 flts. Built in 1987. Sizes 1 bedroom.
Tenure: Tenure(s): Rent (social landlord)
Facilities: Lift, Lounge, Laundry, Garden
Web link: <https://housingcare.org/housing-care/facility-info-9369-plasyberthllanfairfechan-wales>

PRINCESS COURT

Marine Road, Colwyn Bay, Clwyd, LL29 8PJ. [View on a map](#)
Enquiries to: Owner/manager not known
Telephone: 01492 536 105
Type(s): **RETIREMENT HOUSING**

Properties: 129 flts. Built in 1990. Sizes 1 bedroom, 2 bedroom.

Tenure: Tenure(s): Leasehold and Rent (market)

Facilities: Lift, Lounge, Laundry, Garden

Web link: <https://housingcare.org/housing-care/facility-info-18345-princess-court-colwynbay-wales>

QUEENSWAY

Old Colwyn, Colwyn Bay, Conwy, LL29 9ED. [View on a map](#)

Enquiries to: Cartref Conwy

Telephone: 0300 124 0040

Email: enquiries@cartrefionwy.org

Type(s): **AGE EXCLUSIVE HOUSING**

Properties: 6 bungalows. Built in 1953. Sizes 1 bedroom. Includes mobility standard properties.

Tenure: Tenure(s): Rent (social landlord)

Web link: <https://housingcare.org/housing-care/facility-info-7010-queensway-old-colwynwales>

RHOS MANOR

Penrhyn Avenue, Rhos-on-Sea, Clwyd, LL28 4PN. [View on a map](#)

Enquiries to: Commerson Estate Management Ltd

Telephone: 0330 111 2610

Email: info@commerson-em.com

Type(s): **RETIREMENT HOUSING**

Properties: 50 flts. Built in 1992. Sizes 1 bedroom, 2 bedroom.

Tenure: Tenure(s): Leasehold

Facilities: Lift, Lounge, Laundry, Guest facilities, Garden, kitchen

Web link: <https://housingcare.org/housing-care/facility-info-15793-rhos-manor-rhosonseawales>

RHOSLAN PARK

Conway Road, Colwyn Bay, Clwyd, LL29 7HR. [View on a map](#)

Enquiries to: Emeritus Homes Ltd

Telephone: 01492 531 152

Email: help@emeritushomes.co.uk

Type(s): **RETIREMENT HOUSING**

Properties: 58 flts. Built in 1990. Sizes 1 bedroom, 2 bedroom.

Tenure: Tenure(s): Leasehold (equity share) and Rent (market)

Facilities: Lounge, Laundry, Guest facilities

Web link: <https://housingcare.org/housing-care/facility-info-17307-rhoslan-park-colwynbay-wales>

SCHEME NAME UNKNOWN

Llanfair Talhaiarn, Conwy, LL22 8RY. [View on a map](#)

Enquiries to: Cartref Conwy

Telephone: 0300 124 0040

Email: enquiries@cartrefionwy.org

Type(s): **AGE EXCLUSIVE HOUSING**

Properties: 24 bungalows. Built in 1980. Sizes 1 bedroom, 2 bedroom. Includes mobility standard properties.

Tenure: Tenure(s): Rent (social landlord)

Web link: <https://housingcare.org/housing-care/facility-info-6996-scheme-name-unknownllanfair-talhaiarn-wales>

SCOTLAND STREET

Llanrwst, Conwy, LL26 0AL. [View on a map](#)

Enquiries to: Cartref Conwy
Telephone: 0300 124 0040
Email: enquiries@cartrefionwy.org
Type(s): **RETIREMENT HOUSING**
Properties: 22 fts. Built in 1970. Sizes 1 bedroom, 2 bedroom. Includes mobility standard properties.
Tenure: Tenure(s): Rent (social landlord)
Web link: <https://housingcare.org/housing-care/facility-info-1394-scotland-street-llanrwstwales>

ST ANDREWS AVENUE

Llandudno, Conwy, LL30 2YS. [View on a map](#)
Enquiries to: Cartref Conwy
Telephone: 0300 124 0040
Email: enquiries@cartrefionwy.org
Type(s): **RETIREMENT HOUSING**
Properties: 59 fts, bungalows. Built in 1960. Sizes 1 bedroom, 2 bedroom. Includes mobility standard properties.
Tenure: Tenure(s): Rent (social landlord)
Web link: <https://housingcare.org/housing-care/facility-info-1401-st-andrews-avenuellandudno-wales>

ST SEIRIOL'S GARDENS

Llandudno, Conwy, LL30 2YU. [View on a map](#)
Enquiries to: Cartref Conwy
Telephone: 0300 124 0040
Email: enquiries@cartrefionwy.org
Type(s): **RETIREMENT HOUSING**
Properties: 17 fts, bungalows. Built in 1960. Sizes 1 bedroom, 2 bedroom. Includes mobility standard properties.
Tenure: Tenure(s): Rent (social landlord)
Web link: <https://housingcare.org/housing-care/facility-info-1406-st-seiriols-gardensllandudno-wales>

ST SEIRIOL'S ROAD

St. Seiriol's Road, Llandudno, Conwy, LL30 2YY. [View on a map](#)
Enquiries to: Cartref Conwy
Telephone: 0300 124 0040
Email: enquiries@cartrefionwy.org
Type(s): **RETIREMENT HOUSING**
Properties: 6 fts. Built in 1961. Sizes 1 bedroom, 2 bedroom.
Tenure: Tenure(s): Rent (social landlord)
Web link: <https://housingcare.org/housing-care/facility-info-1407-st-seiriols-roadllandudno-wales>

SWN-Y-MOR

78 Conway Road, Colwyn Bay, Clwyd, LL29 7LE. [View on a map](#)
Enquiries to: FirstPort
Telephone: 0333 321 4041 (management) or 0333 321 4072 (sales)
Email: enquiries@retirementhomesearch.co.uk
Type(s): **RETIREMENT HOUSING**
Properties: 56 fts. Built in 1988. Sizes 1 bedroom, 2 bedroom.
Tenure: Tenure(s): Leasehold
Facilities: Lift, Lounge, Laundry, Guest facilities, Garden, kitchen
Web link: <https://housingcare.org/housing-care/facility-info-15893-swnymor-colwyn-baywales>

TAN Y FRON

Ffordd y Orsedd, Llandudno, Conwy, LL30 1NN. [View on a map](#)

Enquiries to: Clwyd Alyn Housing Association Ltd

Telephone: 0800 183 5757 or 01745 536800

Email: enquiries@pennaf.co.uk

Type(s): **EXTRA CARE HOUSING**

Properties: 46 fts. Built in 2012. Sizes 1 bedroom, 2 bedroom.

Tenure: Tenure(s): Rent (social landlord) and Leasehold

Facilities: Lift, Lounge, Restaurant open to the public, Laundry, Guest facilities, Garden, Conservatory, Hobby room, Hairdressing salon, Library, multi use/cinema room

Web link: <https://housingcare.org/housing-care/facility-info-159629-tan-y-fron-llandudnowales>

TANNERY COURT

Water Street, Abergele, Conwy, LL22 7SR. [View on a map](#)

Enquiries to: Retirement Security Ltd

Telephone: 0800 389 9384

Email: nick@retirementsecurity.co.uk

Type(s): **ENHANCED SHELTERED HOUSING**

Properties: 50 fts. Built in 2007. Sizes 2 bedroom, 3 bedroom.

Tenure: Tenure(s): Leasehold

Facilities: Lift, Lounge, Dining room, Laundry, Guest facilities, Garden, Hobby room

Web link: <https://housingcare.org/housing-care/facility-info-88027-tannery-court-abergelewales>

TANRALLT

Dolwyddelan, Conwy, LL25 0RJ. [View on a map](#)

Enquiries to: Grwp Cynefi

Telephone: 0300 111 2122

Email: post@grwpcynefi.org

Type(s): **AGE EXCLUSIVE HOUSING**

Properties: 4 bungalows. Built in 1990. Sizes 1 bedroom.

Tenure: Tenure(s): Rent (social landlord)

Web link: <https://housingcare.org/housing-care/facility-info-5449-tanrallt-dolwyddelanwales>

TAN-Y-GRAIG

Llanrwst, Conwy, LL26 0NA. [View on a map](#)

Enquiries to: Cartref Conwy

Telephone: 0300 124 0040

Email: enquiries@cartrefionwy.org

Type(s): **RETIREMENT HOUSING**

Properties: 18 fts, bungalows. Built in 1985. Sizes 1 bedroom, 2 bedroom.

Includes mobility standard properties.

Tenure: Tenure(s): Rent (social landlord)

Web link: <https://housingcare.org/housing-care/facility-info-1416-tanygraig-llanrwst-wales>

TAVERNERS COURT

Lloyd Street West, Llandudno, Conwy, LL30 2DB. [View on a map](#)

Enquiries to: North Wales Housing Association

Telephone: 01492 572 727

Email: customerservices@nwaha.org.uk

Type(s): **RETIREMENT HOUSING**

Properties: 31 fts. Built in 1991. Sizes 1 bedroom, 2 bedroom. Includes mobility and wheelchair standard properties.

Tenure: Tenure(s): Rent (social landlord)
Facilities: Lift, Lounge, Guest facilities, Garden
Web link: <https://housingcare.org/housing-care/facility-info-9364-taverners-courtllandudno-wales>

TRINITY AVENUE

Llandudno, Conwy, LL30 2YQ. [View on a map](#)
Enquiries to: Cartref Conwy
Telephone: 0300 124 0040
Email: enquiries@cartrefionwy.org
Type(s): **RETIREMENT HOUSING**
Properties: 18 fts, bungalows. Built in 1966. Sizes 1 bedroom, 2 bedroom. Includes mobility standard properties.
Tenure: Tenure(s): Rent (social landlord)
Web link: <https://housingcare.org/housing-care/facility-info-1414-trinity-avenue-llandudnowales>

TUDOR COURT

Tudor Road, Llandudno, Conwy, LL30 1BU. [View on a map](#)
Enquiries to: Emeritus Homes Ltd
Telephone: 01492 871 183
Email: help@emeritushomes.co.uk
Type(s): **RETIREMENT HOUSING**
Properties: 30 fts. Built in 1990. Sizes 1 bedroom, 2 bedroom.
Tenure: Tenure(s): Leasehold (equity share)
Facilities: Lift, Lounge, Laundry, Guest facilities, Garden, Conservatory
Web link: <https://housingcare.org/housing-care/facility-info-19062-tudor-court-llandudnowales>

TWR LLEWELYN

Conwy, Conwy, LL32 8HY. [View on a map](#)
Enquiries to: Cartref Conwy
Telephone: 0300 124 0040
Email: enquiries@cartrefionwy.org
Type(s): **RETIREMENT HOUSING**
Properties: 20 fts. Built in 1985. Sizes 1 bedroom. Includes mobility standard properties.
Tenure: Tenure(s): Rent (social landlord)
Facilities: Lift, Guest facilities, Garden
Web link: <https://housingcare.org/housing-care/facility-info-1411-twr-llewelyn-conwywales>

TY ABBEYFIELD

Llys Henar, Denbigh Street, Llanrwst, Gwynedd, LL26 0AE. [View on a map](#)
Enquiries to: Abbeyfield Llanrwst & District Society Ltd
Telephone: 01492 642 373
Email: davidamona.jones@googlemail.com
Type(s): **RETIREMENT HOUSING**
Properties: 9 fts. Built in 1998. Sizes studio.
Tenure: Tenure(s): Rent (social landlord)
Facilities: Dining room, Laundry, Garden, Conservatory, foyer
Web link: <https://housingcare.org/housing-care/facility-info-117307-ty-abbeyfieldllanrwst-wales>

TY GWYNN JONES

Rhuddlah Road, Abergele, Conwy, LL22 7HQ. [View on a map](#)
Enquiries to: Wales & West Housing
Telephone: 0800 052 2526

Email: contactus@wwha.co.uk

Type(s): **RETIREMENT HOUSING**

Properties: 32 fts. Built in 1984. Sizes studio, 1 bedroom, 2 bedroom.

Tenure: Tenure(s): Rent (social landlord)

Facilities: Lift, Lounge, Laundry, Guest facilities, Garden

Web link: <https://housingcare.org/housing-care/facility-info-10953-ty-gwynn-jonesabergele-wales>

TY LLEWELYN

Llewelyn Road, Colwyn Bay, Conwy, LL29 7AS. [View on a map](#)

Enquiries to: North Wales Housing Association

Telephone: 01492 572 727

Email: customerservices@nwaha.org.uk

Type(s): **AGE EXCLUSIVE HOUSING**

Properties: 11 fts. Built in 1990. Sizes 1 bedroom, 2 bedroom. Includes mobility standard properties.

Tenure: Tenure(s): Rent (social landlord)

Facilities: Lift, Garden

Web link: <https://housingcare.org/housing-care/facility-info-9379-ty-llewelyn-colwyn-baywales>

VICTOR WILDE DRIVE

Rhos on Sea, Colwyn Bay, Conwy, LL28 4LJ. [View on a map](#)

Enquiries to: Cartref Conwy

Telephone: 0300 124 0040

Email: enquiries@cartrefionwy.org

Type(s): **AGE EXCLUSIVE HOUSING**

Properties: 24 bungalows. Built in 1966. Sizes 1 bedroom. Includes mobility standard properties.

Tenure: Tenure(s): Rent (social landlord)

Web link: <https://housingcare.org/housing-care/facility-info-7029-victor-wilde-drive-rhoson-sea-wales>

WORSLEY

Coed Pella Road, Colwyn Bay, Conwy, LL29 8LR. [View on a map](#)

Enquiries to: Cartref Conwy

Telephone: 0300 124 0040

Email: enquiries@cartrefionwy.org

Type(s): **AGE EXCLUSIVE HOUSING**

Properties: 6 fts. Built in 1978. Sizes 1 bedroom. Includes mobility standard properties.

Tenure: Tenure(s): Rent (social landlord)

Web link: <https://housingcare.org/housing-care/facility-info-7024-worsley-colwyn-baywales>

Y BERLLAN

Penmaenmawr, Gwynedd, LL34 6HR. [View on a map](#)

Enquiries to: Cartref Conwy

Telephone: 0300 124 0040

Email: enquiries@cartrefionwy.org

Type(s): **RETIREMENT HOUSING**

Properties: 22 fts. Built in 1969 and renovated in 2008. Sizes 2 bedroom.

Tenure: Tenure(s): Rent (social landlord)

Facilities: Lift

Web link: <https://housingcare.org/housing-care/facility-info-1388-y-berllan-penmaenmawrwales>