

Enhancing your local area

Redevelopment of land at Northampton Road, Newport Pagnell

Local need

Population projections by Milton Keynes Council show that between 2015 – 2026, there will be a 44.1% increase in the population of people aged 65 – 79, and a further 66.9% increase in people aged 80+. The Council's Strategic Housing Market Assessment (2017) recommends that approximately 1,200 additional specialist housing units would be required to help meet the varied needs of the ageing population in Milton Keynes.

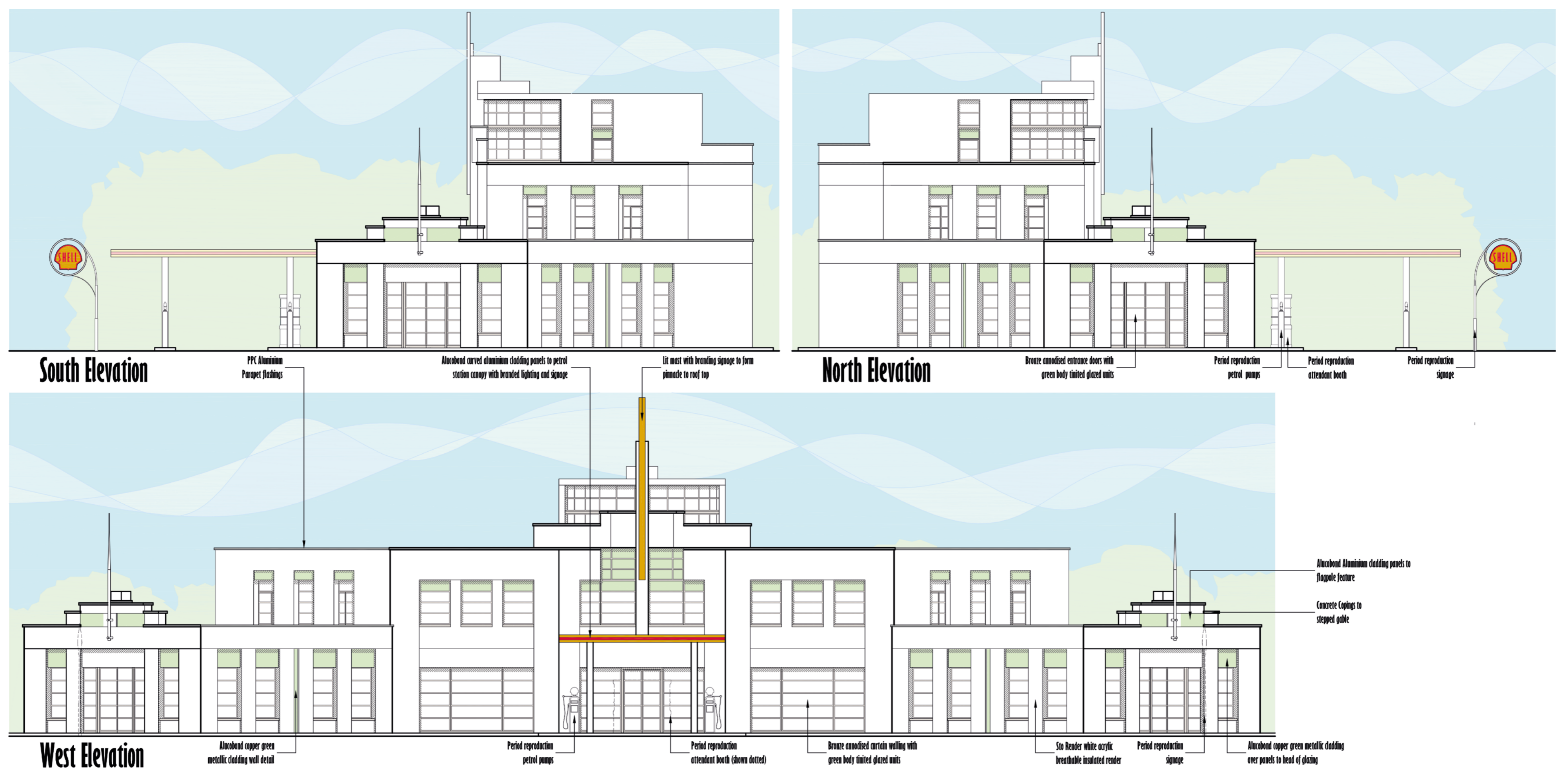


Proposed site plan

Local design and characteristics

The design of our proposals are predominantly led by the previously successful planning consent for the site which was originally secured in 2012. Please see below for the previously consented elevations plans.

Adopting this design approach will allow us to deliver a similar art-deco style development that responds to the heritage of the local area and provides a well-designed landmark at this entrance to Newport Pagnell.



Previously consented scheme [Source: Milton Keynes Council Planning Portal - Ref. No: 12/01890/FUL]