



A sustainable way of living

We work hard to build environmentally friendly developments, with each scheme having high standards of insulation and energy efficiency. The majority of our homeowners could save around £1,200 per year on running costs when compared with their previous property.

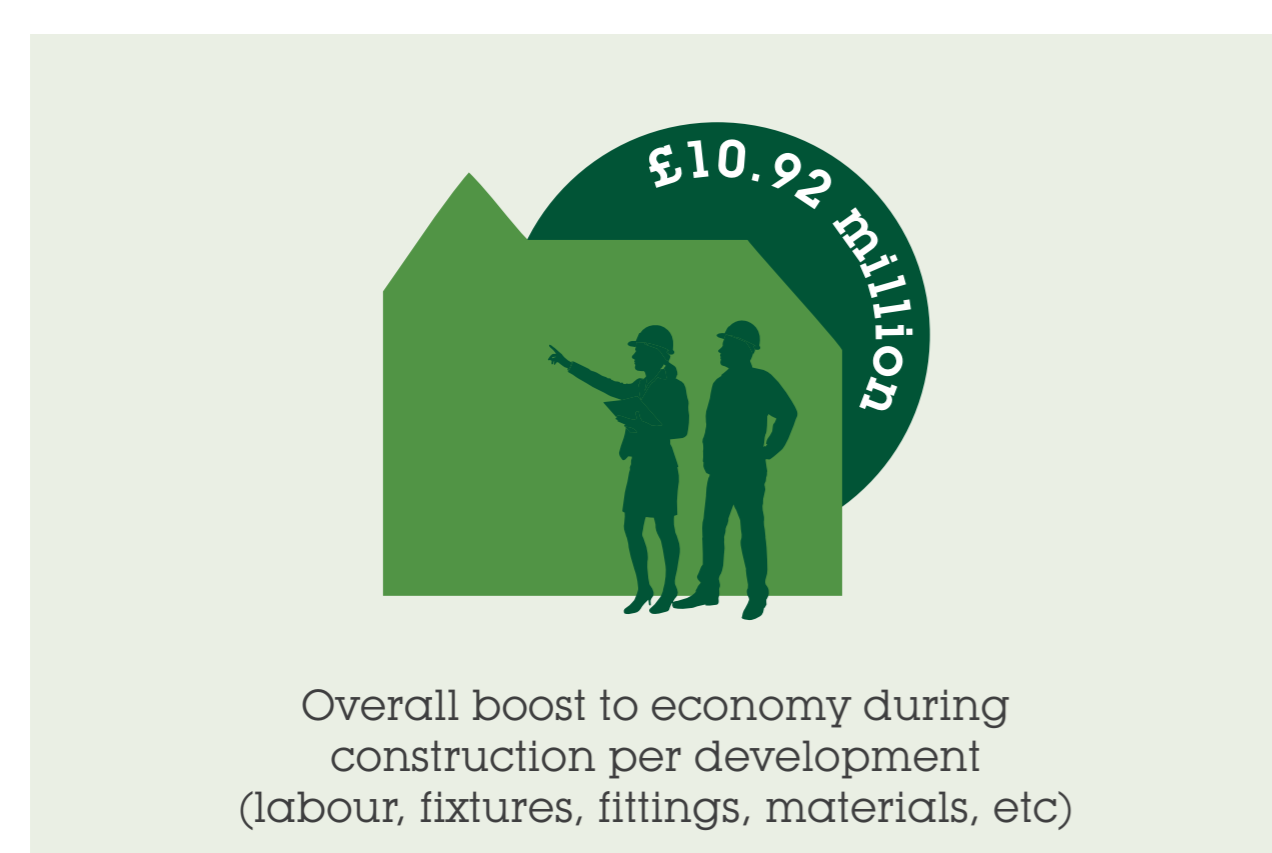
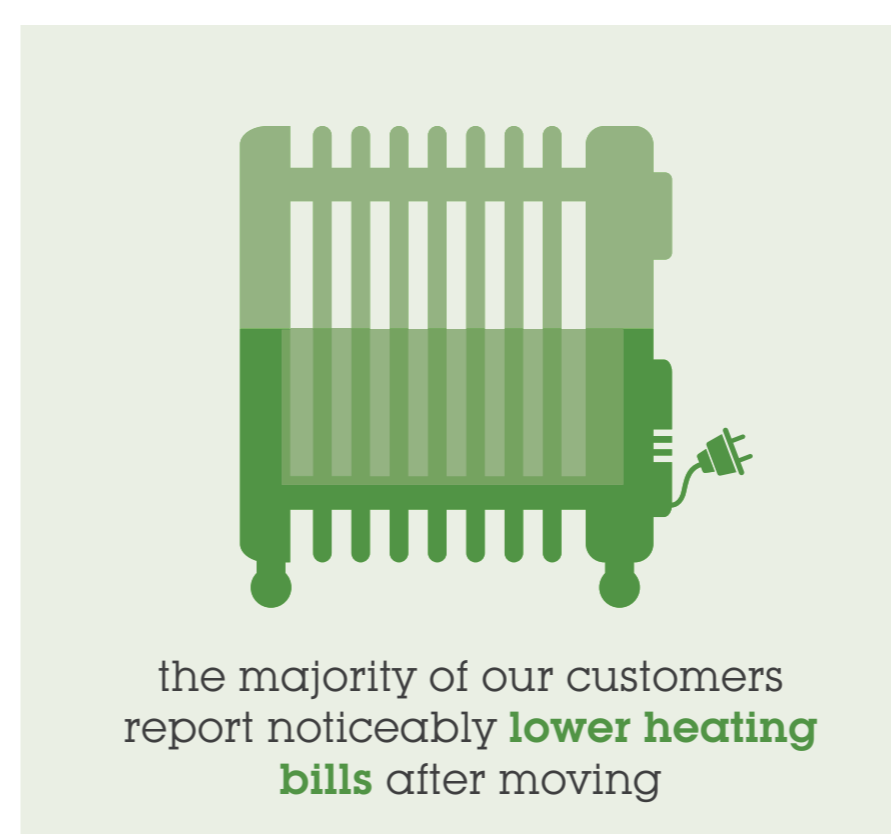
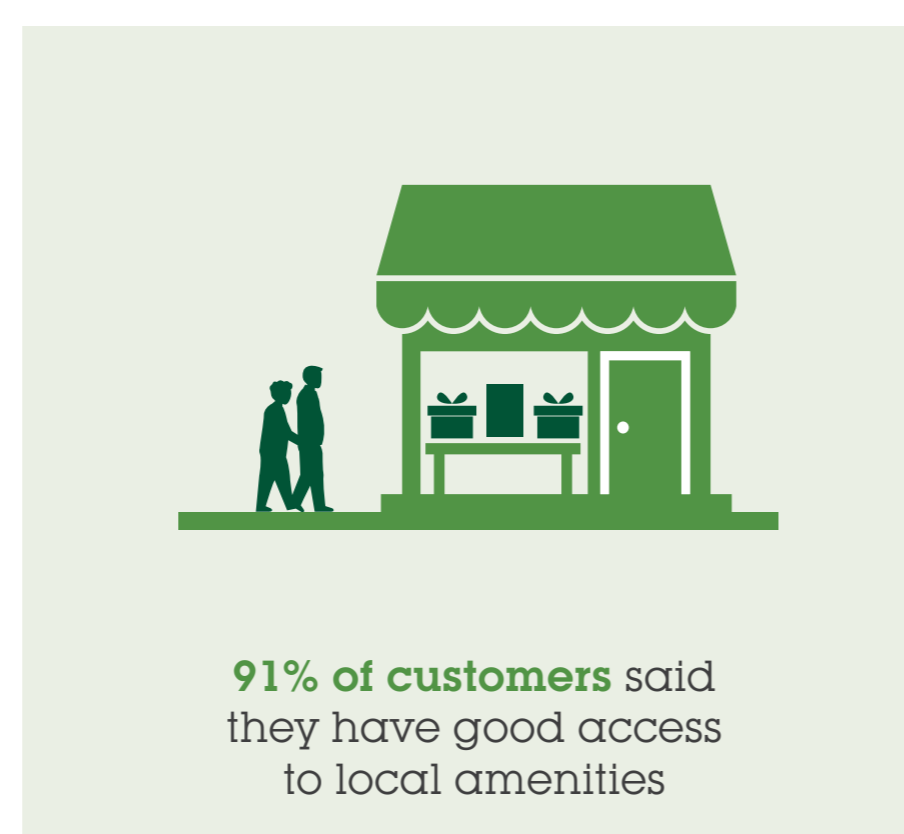
Our sites are usually on previously developed land and are close to towns, local shops, facilities and transport links, which means that our homeowners have a reduced reliance on their own cars and a smaller 'carbon footprint'.

Indeed, in later life, the decision to move to specialist accommodation located closer to the shops and services that they place most reliance on, often goes hand in hand with relinquishing their car. Of those who do decide to keep hold of their car, many will often decide to sell it after a year or so when they realise that it is no longer essential to maintaining their independence.

We also manage every aspect of the construction process and we look to ensure that our activities have regard to site neighbours and the general public.



Supporting the local community



Statistics were sourced from: • The Local Area Economic Impact Assessment prepared by the Institute of Public Care at Oxford Brookes University, 2014. • Housing markets and independence in old age, University of Reading, 2011. • A Better Life Report by Roger Tym & Partners in 2004