



## What is Retirement Living?

Retirement Living creates safe and secure environments for our homeowners to continue to live an active, independent life with oversight care provided by our management company, and via our emergency call system. Homeowners have their own front doors and privacy just as they did in their previous homes and they are free to join in community activities within the development or to pursue their own interests as they please.

Apartments can be occupied by people aged 60 or over and are provided for outright sale, as well as shared ownership, rent and part rent-part buy. The average age of residents upon purchase is 79, and the majority of homeowners moving into our developments already live in the local area.

## Designed to make life a little easier

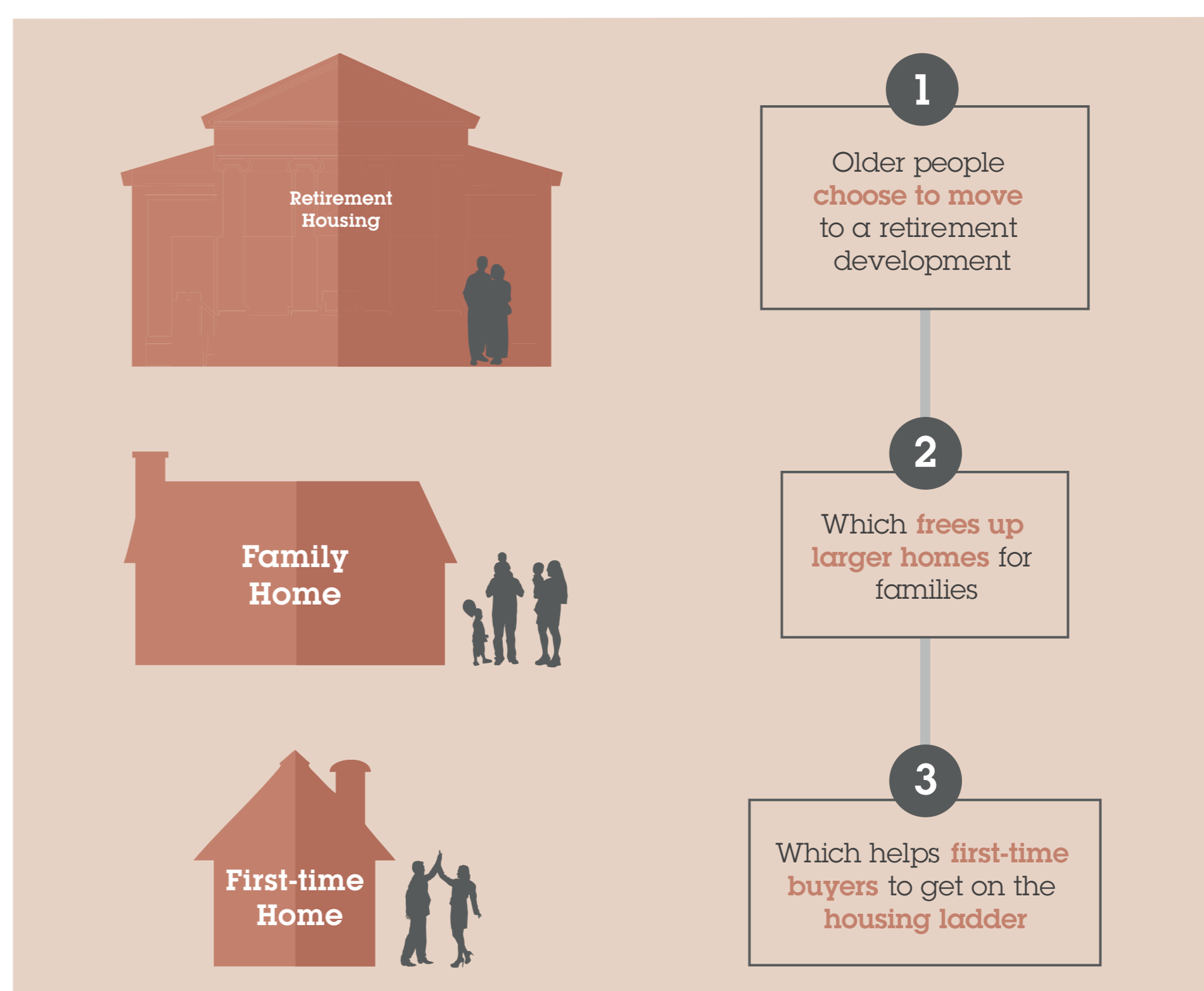
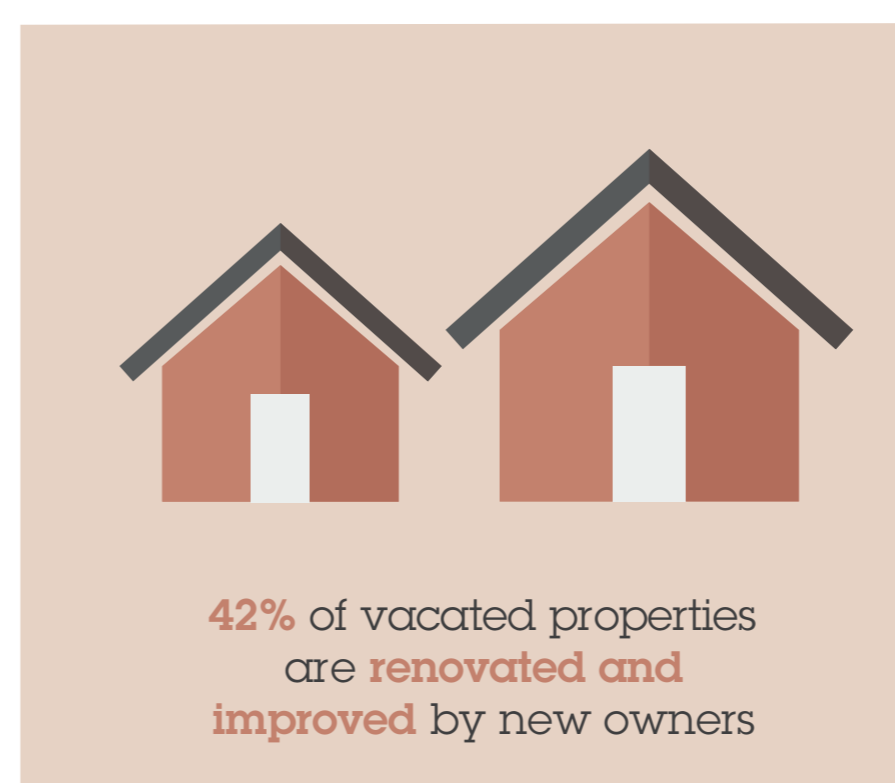
Our developments are carefully designed with the needs of older homeowners in mind, with step-free access throughout the building.

The apartments are all built to 'Lifetime Homes' standards and are adaptable for wheelchair use. They are built to generous internal space standards and incorporate features designed to help homeowners maintain their independence; such as 24-hour emergency call points, level-access bathrooms, good lighting, and switches / electrical sockets at a raised height to reduce bending.

## All the independence, none of the worry

Having to maintain a large property can be a burden, especially for someone living on their own. That's why every Retirement Living development has its own fully-trained House Manager – someone to manage the day-to-day running of the development and to be on hand during office hours. Our House Managers act as a 'friendly neighbour' and helps to arrange many of the social activities that take place in our developments.

We are experts in the experience of growing older, and constantly adapt our offering to the changing needs of our homeowners, with flexible on-site services, including electric car clubs in some of our developments. Homeowners also have a camera entry system linked to the TV in their apartment, and the peace of mind of having our 24-hour emergency call service available at the push of a button. Estate management and support services are provided by us – no third party is involved.



Statistics were sourced from: Internal data from McCarthy & Stone, 2018, and the Local Area Economic Impact Assessment by the Institute of Public Care at Oxford Brookes University, 2014.