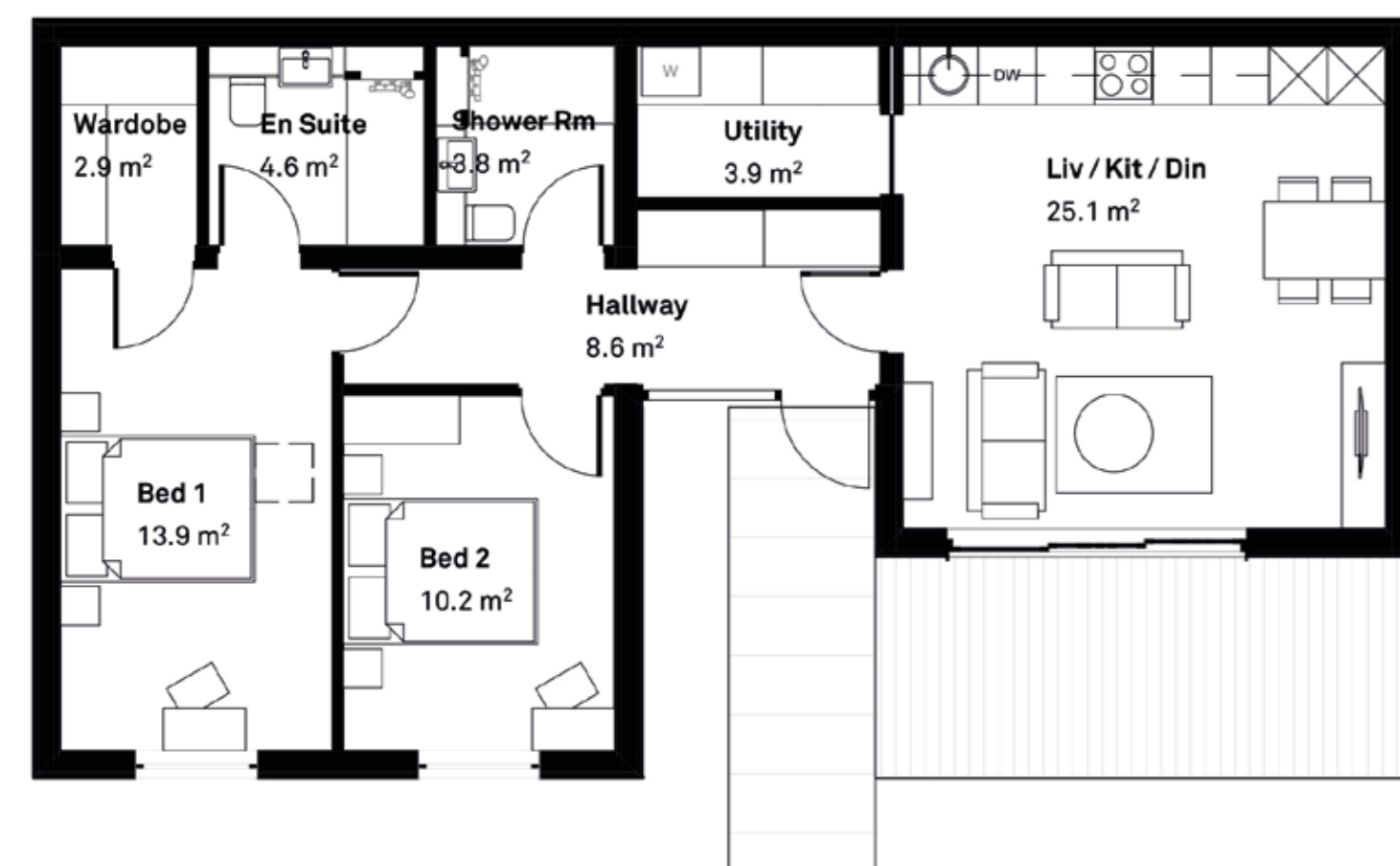


## Unique, Specialist Bungalows

We have worked extensively with specialist architects to design the bungalows to specifically respond to customer research that we have undertaken and will be unique to Wimborne.

These new bungalows will provide a new and exciting option for local older people who would like a greater deal of privacy than would typically be found in traditional care housing or bungalows. We have incorporated the following into our proposed bungalows:

- The proposed room layouts respond to the aspirations and needs of our customers, with open plan kitchen and living spaces with large patio doors which provide large amounts of light and directly link to private garden areas
- Private front terraces that facilitate for social interaction whilst providing privacy through planting allowing residents to sit out and enjoy outside space without having to congregate in more communal areas
- A modular form that enables an efficient layout around a series of courtyard gardens to create smaller communities within the development that could not be achieved through traditional bungalows
- Easy, disabled access throughout the homes and to outdoor spaces

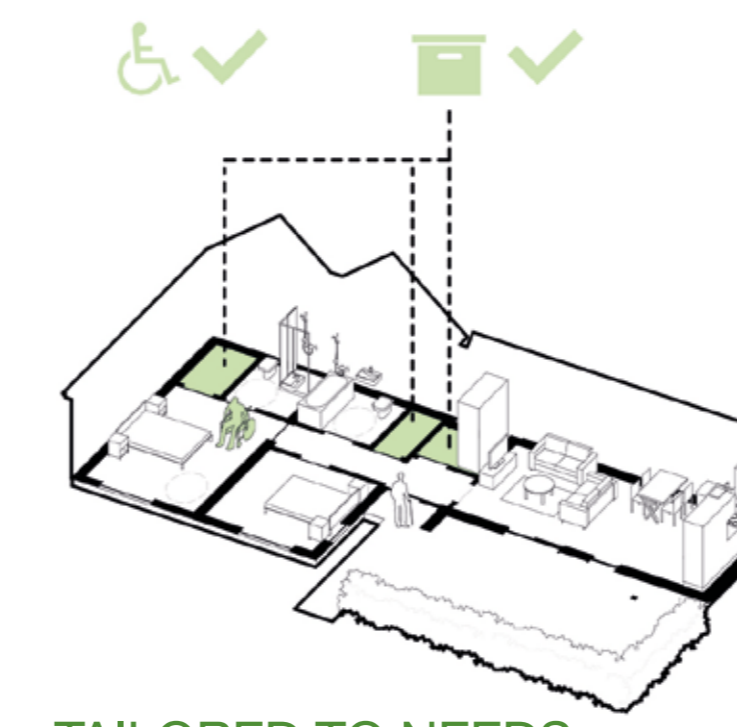


Bungalow Type 1 – Typical plan

Bungalow Type 2 – Typical plan



CGI of the development



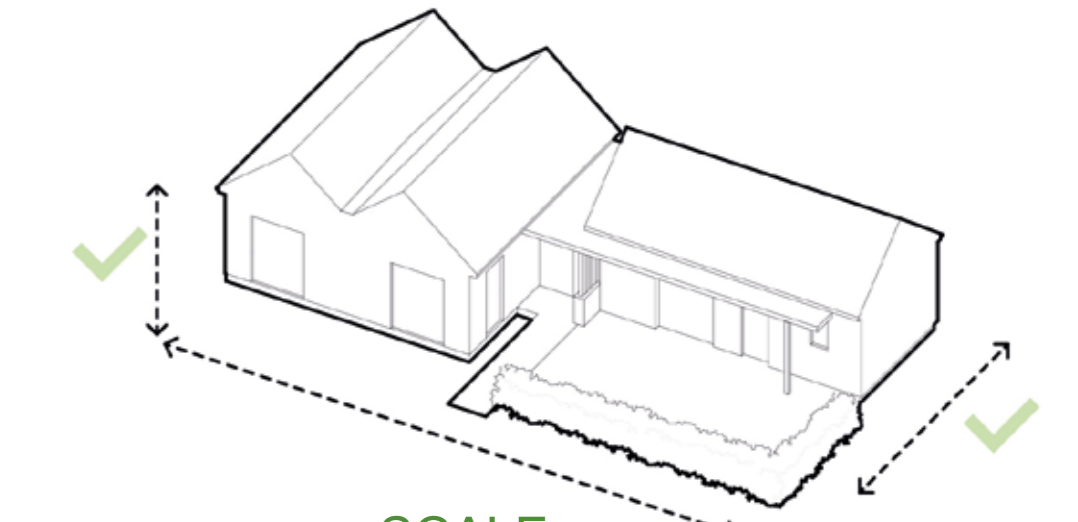
### TAILORED TO NEEDS

The design was led by elderly residents' needs. Houses are wheelchair adaptable and provide a significant amount of storage space for someone downsizing.



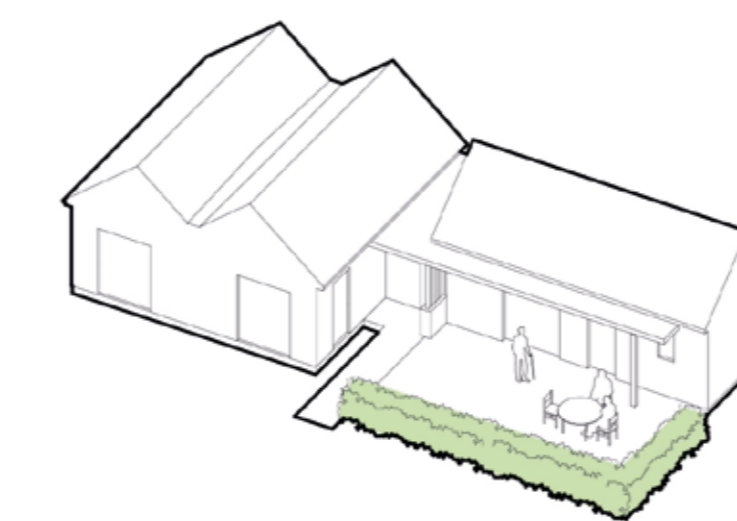
### ONE LEVEL

All accommodation has been arranged on one level to create barrier free space for elderly residents.



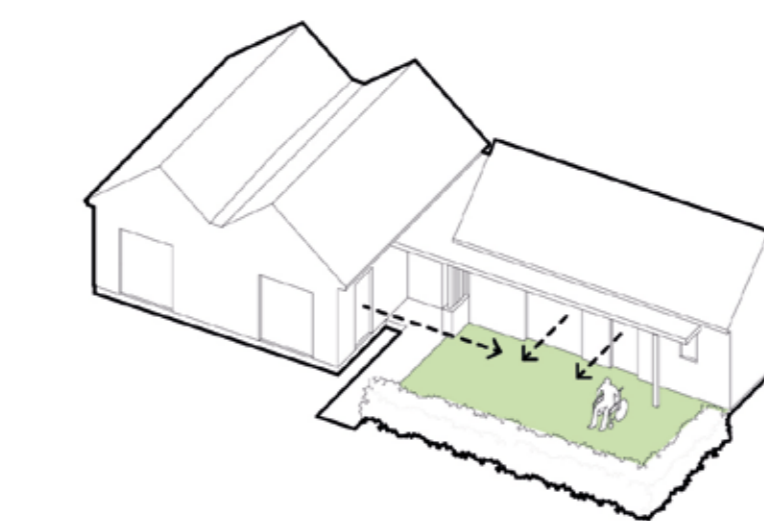
### SCALE

Friendly scale giving more village feel. Not too big, but just right to satisfy habitants needs.



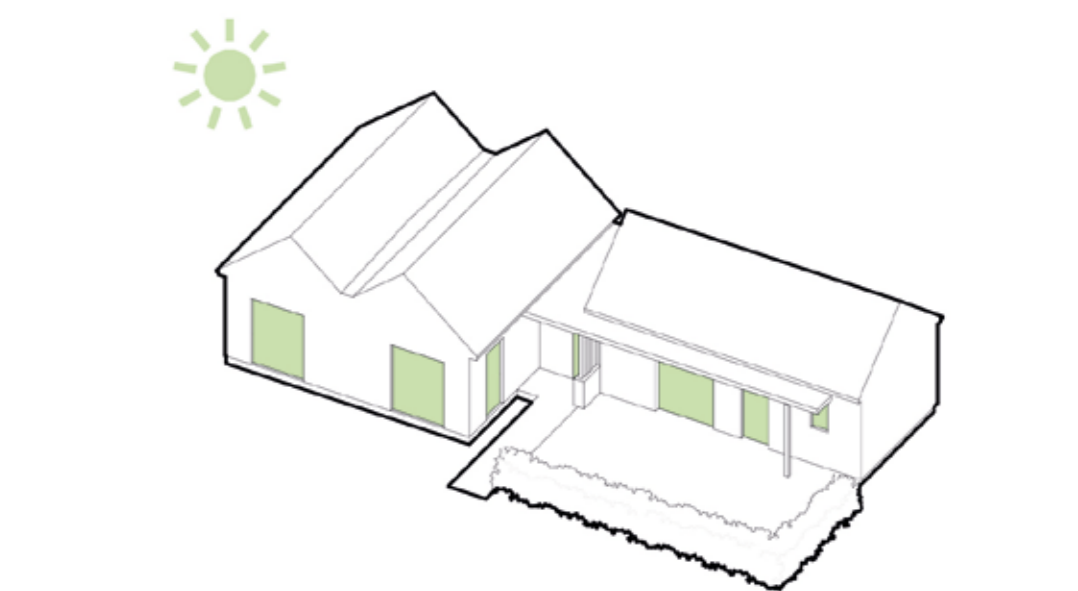
### PRIVACY

Window orientation to external private space and planted screen to enhance the privacy.



### ACCESSIBILITY OF OUTDOOR AMENITY SPACE

The external amenity space is easily accessible from inside of house. The two wings and green screen create a cosy semi enclosed courtyard.



### LIGHT

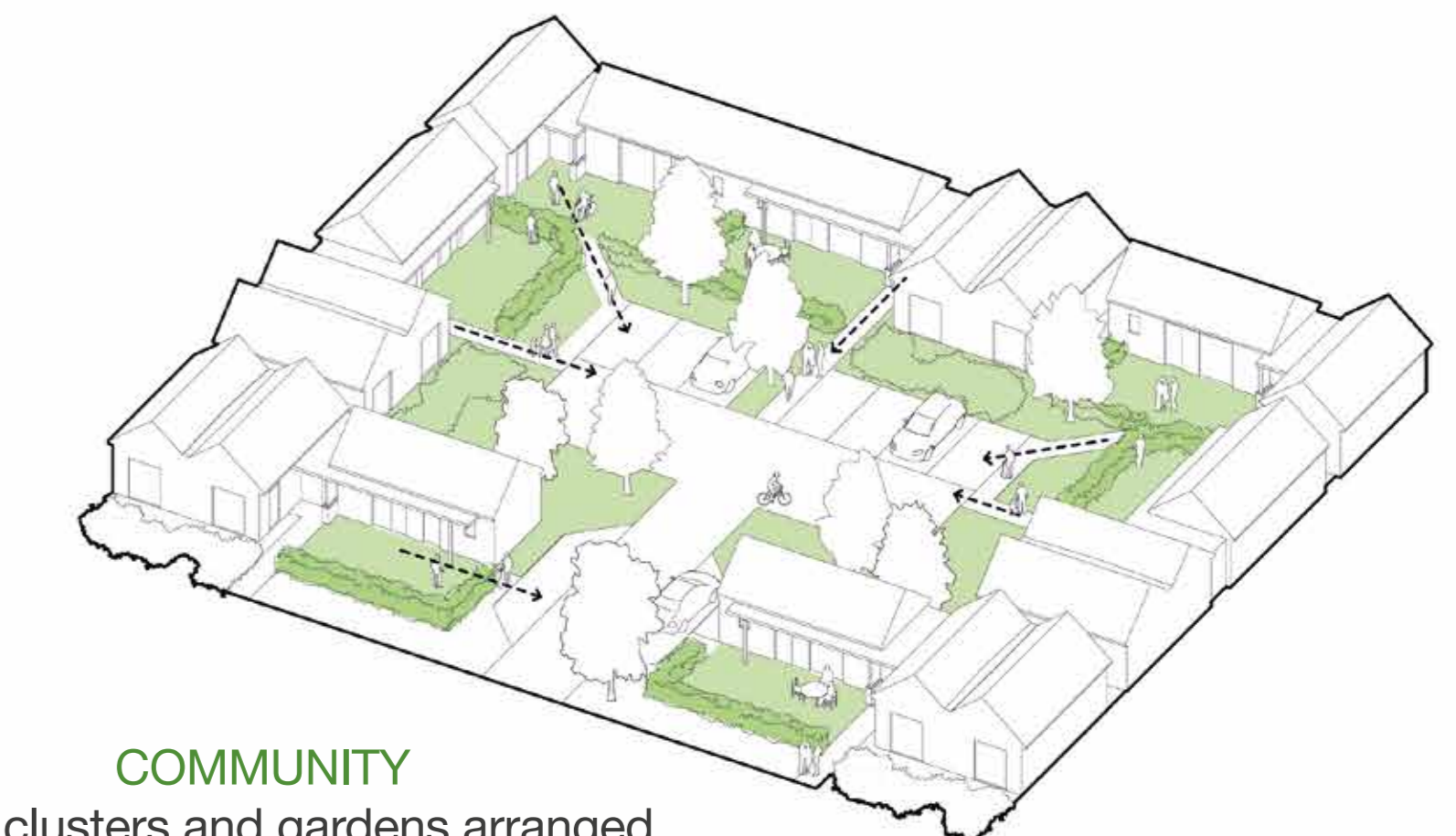
Large openings and windows increase the amount of daylight inside and contribute to habitants wellbeing.

Bungalow concept diagrams



### VILLAGE FEEL

Small scale of the buildings and a lot of greenery contribute to creating 'green village feel'.



### COMMUNITY

Small clusters and gardens arranged around shared community space support interactions and foster community.



### ACCESSIBILITY AND PARKING

Provision and convenient location of individual parking spaces improves accessibility for elderly and disabled. The dropped kerbs will provide barrier free routes for mobility scooters and wheelchairs.



### CENTRAL COMMUNITY HUB AND FACILITIES

The small clusters are surrounding communal gardens and open spaces. A wellbeing suite as well as ground floor of residential accommodation located central, will house a bistro, cafe, library and will provide essential services, all forming central community and meeting hub.

Cluster concept diagrams